



# Being Vital

2019 Annual Report

VALLEY PRESBYTERIAN HOSPITAL





This Valley is not just an area of operation. It's our home. And its people are not just patients. They're our friends, our partners, our community.

We are a 350-bed community hospital dedicated to the health and wellbeing of the San Fernando Valley.

So we build the facilities and services specifically focused on meeting the needs of our community. We help our patients manage and improve their health by providing access to a wide array of health care services and encourage a culture that listens intently to care more effectively.

At Valley Presbyterian Hospital we are proud to be...

Vital for access, Vital for growth,  
Vital for life.

Valley Presbyterian Hospital

This Valley is Vital.



Putting our  
community first.



In every action we take, we put patients first. We look to better their outcomes now, while also ensuring we are here for them and future generations in our community. That's a fundamental aspect of being vital to the Valley and the reason that since 1958, Valley Presbyterian Hospital has been providing excellent care to the community.

As the only independent, nonprofit hospital in the Valley, we are committed to meeting the needs of our patients and continuing to grow with those needs. That commitment to providing the community with high-quality care and services is embodied by our Board of Directors, our 1,700 employees and our Medical Staff of more than 500 physicians. Serving our community is only possible through our network of local partners, donors, physicians, and our team of excellent caregivers and we thank them for their continued support. Together, we make a difference in the lives of those we serve and remain intently focused on providing excellence in all we do.

We experienced several accomplishments in 2019, and we are proud to highlight some of those achievements in this year's annual report. In particular, we feature a few

poignant reminders of the impact that a little extra care can have on someone's experience. Our patients entrust us with their lives and we are grateful and honored they do. As a vital part of their care, we will never take that for granted today or in the years to come.

With gratitude,

Kevin Rice, MD  
Chief of Staff

Gregory L. Kay, MD  
Chairman of the Board

Gustavo Valdespino  
President & CEO

# Providing services our community needs most.

### A Patient's Story: Vital to a special moment

When serious illness strikes someone, it can also have a big effect on the lives of those around them. We know that providing care to a patient means considering the patient's family as well. In this case, it meant turning an ICU room into a setting for an intimate wedding and very special father-daughter dance.

"My name is Mindy Takenaka and I would like to begin by thanking you very much for letting my daughter, Kirstie, have her wedding in her father's room in the ICU. Her wedding was one of the events my husband, Mark, was looking forward to. Kirstie's simple and intimate wedding had turned out magical and very memorable.

We are so thankful for your staff, especially Laura, for going out of their way, taking their time and energy in decorating Mark's room; making it so festive and joyful. Laura has gone over and beyond to make it less "ICU-ish" in less than 24 hours and it is so heartwarming."

Mark was alert and happy that day and proud sitting up in his bed. He whispered to Mindy that he knew he looked "spiffy" thanks to John and Triloki, two nurses that gave him a shave and made sure his hair looked great. Although Mark couldn't walk his daughter down the aisle, they were able to "dance" together in a moment the family will remember forever.

"My entire family would like to thank you everyone involved for your presence and support that day. From Dr. Lori Burnell, the administration, doctors and nurses (who were all wearing blue scrubs that day!) - you all made a little girl's dream and a dying father's wish come true." - Mindy Takenaka

(Learn more about Laura on page 9)



### Acute Rehabilitation Services

We provide patients with acute rehabilitation needs with an interdisciplinary team that delivers holistic, patient-centered care. Led by a board-certified physical medicine and rehab physician, the team includes 24-hr on-call nurses, physical therapists, a neuropsychologist, and a broad range of specialists.



### Center for Wound Healing

Our Center is one of the few facilities nationwide that brings together the interdisciplinary expertise of vascular and podiatric surgeons with limb-salvage and wound-management specialists in a state-of-the-art setting.



### Children's Services

We provide compassionate and specialized pediatric care. Each member of our pediatric care team shares a family-centered approach to providing the treatment and support needed for positive outcomes. We are equipped to serve the individual health care needs of children from newborn to age 18.



### Emergency Services

With several designations, our emergency services continues to demonstrate our commitment to excellent care. As a certified cardiac receiving center for heart attack patients, our specialists collaborate to provide critical care within 90 minutes of the onset of chest pain. In addition, our facility is a certified Primary Stroke Center. We have a dedicated stroke-focused program staffed by qualified, specially trained medical professionals who use advanced technologies to act quickly and save lives. Our Emergency Department is also designated as an Emergency Department Approved for Pediatrics, with expedited and specialized care for pediatric patients.



### Heart & Vascular Services

We offer a full range of cardiac services to quickly and accurately diagnose and treat patients suffering from critical heart and vascular conditions. An expert, multidisciplinary medical team is dedicated to acting quickly and saving patients' lives.



### Maternity Services

Our Maternity Services Department delivers more babies than any other hospital in the San Fernando Valley. We offer a family-centered approach and are dedicated to providing comfort and support through the journey of pregnancy, birth and early parenthood.



### Outpatient Services

We offer many outpatient services through our general and gastrointestinal laboratories, Radiology/Imaging Department and therapy programs, including occupational, physical, respiratory and nuclear medicine.



### Surgery Services

We provide a broad range of surgical services representing a wide array of specialty areas. Our physicians and surgical services staff have the tools and advanced technology they need to perform a full range of surgical procedures and to deliver the highest quality of care.



### Wound & Hyperbaric Center

Our expert, multidisciplinary wound care team is dedicated to helping chronic wounds heal where traditional methods have failed. Treatments include advanced diagnostic testing, debridement, advanced wound-dressing technology, negative pressure therapy and many other techniques and technologies.



# Going the extra mile for our patients.

Among the Valley Presbyterian Hospital's most cherished goals is the cultivation of mutual respect among employees, in a work environment they can be proud of. Our Rewards and Recognition programs serves to highlight the excellence that exists in all areas and job functions across the Hospital. VPH provides many ways of acknowledging co-workers and peers.

## 2019 Service Excellence All Star Winners

The Service Excellence All Star program encourages patients, their loved ones and fellow employees to express their gratitude to our employees who demonstrate our Core Values and our Vision of "Excellence in all we do."



**Noel Lopez**  
Non-Patient Food Services

Every role in our hospital can provide vital care that makes a patient or visitor feel more comfortable. No one exemplifies that better than Noel. With a warm smile and professional attitude, Noel helps visitors

feel comfortable dining at the hospital.

One day an elderly gentleman was observed having difficulty understanding the menu and the action station set-up. Though Noel was busy with other tasks, he stopped what he was doing to help. Noel encouraged the gentleman, explained and helped him place his order and made sure he got the meal he wanted.

As part of his job, Noel has accommodated various dietary requests and never makes the individual feel like they are imposing, even when lines are long and he has to multi-task in a busy environment. Cool under pressure and kind to his guests, Noel is a true joy to watch and a great ambassador of care at the hospital. Congratulations Noel!

## 2019 DAISY Winner

The DAISY Award is an international program designed to recognize nurses who go above and beyond to provide compassionate care.



**Laura Swenson**  
Intensive Care Unit

For so many on our nursing staff, caring for patients isn't a job, it's a calling. Laura is one such person. An avid learner, clear and honest communicator, a compassionate advocate for her patients, and having

a remarkably generous spirit are just some of the ways her peers and patients describe her.

As soon as Laura learned that the daughter of a gravely-ill patient wanted to have Mark, her father, present at her wedding and the family expressed interest in having a ceremony at the bedside, she sprung into action. She volunteered to coordinate the event. On her own time, Laura went out and purchased decorations then came in on her off day to decorate the room.

"We are so thankful for your staff, especially Laura, for going out of their way, taking their time and energy in decorating Mark's room; making it so festive and joyful. Laura has gone over and beyond to make it less "ICU-ish" in less than 24 hours and it is so heartwarming." - Mindy Takenaka (mother of the bride)

Laura helped create a very special and memorable experience possible for the family and gave peace to her patient. Following the experience, Mark was ready to transition to comfort measures.

We are so grateful that Laura serves our community. She sets a high standard and provides a shining example of what one person committed to their patients can accomplish. Well done, Laura!



## A Patient's Story: Vital to lifting spirits

Care comes in many forms. The right medicine or treatment, a complex surgery, or physical therapy can all be important to a patient's outcome. But so to can the simple acts of listening and taking personal initiative.

Yuliya Mogilenko was on a night shift, when she encountered a patient recovering from a back injury and instinctively knew he was not in great spirits. She engaged him in conversation and soon got him to crack a smile. As the conversation continued, the patient expressed how active he was prior to needing a prosthetic leg and how he used to love walking on the beach. Yuliya also discovered that at previous hospitals this patient was discharged without clothes of his own. He also told Yuliya that one of his favorite meals is a pastrami sandwich from a deli in Northridge.

Yuliya took note of her patient's interests and concerns and on her off day, drove out to the Deli in Northridge and brought her patient his favorite pastrami sandwich. She also gave him a set of fresh clothes he could return home in.

"I was blown away," said the patient. "Honestly, everyone has been wonderful...you guys made me feel like a human being."

The patient also recognized Jaskiran Mangat, Guadalupe Padilla and the entire team for the excellent care he received during his stay. Great job, team!

# Quality and Patient Safety

Valley Presbyterian Hospital has embarked on a journey to increase safety and quality for the populations we serve. We are committed to providing our patients with the best quality of care and outcomes possible. As part of our dedication to quality and safety, we constantly work to refine and improve our processes, while being transparent.

Our teams have integrated performance improvement teams and work groups that develop evidence based strategies and interventions. At the same time, we continue to monitor performance to demonstrate effectiveness of our interventions.

Valley Presbyterian Hospital is accredited by DNV Healthcare, the leading accreditation company of hospitals in the U.S. DNV integrates ISO 9001 quality compliances with the Medicare conditions of participation. This accreditation helps lay the foundation for quality management, and validates our commitment to excellence.

We are recognized regionally for our cardiac care and STEMI receiving center,

caring for heart attack patients within the critical 90 minutes of an episode, 24/7. We are also a Certified Primary Stroke Center, providing immediate access to a neurologist and rapid treatment. Our Pediatric Medical Center Designation allows our team of specialists to provide a higher level of care; and our Emergency Department Approved for Pediatrics (EDAP) designation means that we have specialized pediatric teams who are ready at a moment's notice to assemble, triage, and fast-track children to get them care they urgently need.

We have started on our journey to be a Magnet recognized designation. As the highest honor in American nursing, we look forward to joining the 6 percent of the country's hospitals in achieving this recognition.

While our range of acute-care services and expertise has continued to expand, we remain a community based hospital at heart. As one of the Valley's only independent, non-profit, and locally governed institutions, we provide an exceptional level of care that responds to the needs of our community.



Outcome Measures

Lower is Better

	CLABSI	Colon SSI	NTSV	Sepsis Mortality	VTE
Valley Presbyterian Hospital	0.53 SIR	0.614 SIR	19.8%	20.1%	0.00%
California Level	0.78 SIR	0.97 SIR	23.50%	14.30%	3.00%
National Level	0.74 SIR	0.90 SIR	25.90%	25.00%	3.00%

Standardized Infection Ratio (SIR)

Program Status Measures

<input checked="" type="checkbox"/> Yes <input type="checkbox"/> No <input type="checkbox"/> Not a maternity hospital	<b>This hospital has a Maternity Safety Program in place.</b> A maternity safety program provides a coordinated approach and emergency response to risks associated with pregnancy and childbirth.
<input checked="" type="checkbox"/> Yes <input type="checkbox"/> No	<b>This hospital has a Sepsis Protocol in place.</b> A sepsis protocol provides guidance for a coordinated approach to identification and treatment of an infection and inflammatory response which is present throughout the body.
<input checked="" type="checkbox"/> Yes <input type="checkbox"/> No	<b>This hospital has a Respiratory Monitoring program in place.</b> Respiratory monitoring provides guidance for assessment of risk of respiratory depression, and includes continuous monitoring of breathing and functioning of the lungs and circulatory system when indicated.

Outcome Measure Definitions:

**CLABSI - Central line-Associated Blood Stream Infection:** A serious infection that occurs when germs enter the bloodstream through a central line. A central line is a special intravenous catheter (IV) that allows access to a major vein close to the heart and can stay in place for weeks or months. The value shown above is a Standardized Infection Ratio (SIR), which is the ratio of observed-to-expected infections during the measure period. SIRs below 1.00 indicate that the observed number of infections during the measure period was lower than would be expected under normal conditions, whereas values above 1.00 indicate that the observed number of infections was higher than expected. Limitations: In the calculation of the Standardized Infection Ratio (SIR), the CDC adjusts for differences between hospitals. However, patient risk factors are not taken into account. These patient-specific variables (e.g., poor skin integrity, immunosuppression) can increase the risk of developing a central line infection. Hence, the SIR for hospitals that care for more medically complex or immunosuppressed patients may not be adequately adjusted to account for those patient-specific risk factors.

**Colon SSI - Colon Surgical Site Infection:** An infection (usually bacteria) that occurs after a person has colorectal surgery that occurs at the body site where the surgery took place. While some involve only the skin, others are more serious and can involve tissues under the skin, organs, or implanted material. The value shown above is a Standardized Infection Ratio (SIR), which is the ratio of observed-to-expected infections during the measure period. SIRs below 1.00 indicate that the observed number of infections during the measure period was lower than would be expected under normal conditions, whereas values above 1.00 indicate that the observed number of infections was higher than expected. Limitations: Some, but not all patient-specific risk factors are included in the adjustment of the SIR for these types of infections. However, not all relevant risk factors are included (e.g., trauma, emergency procedures). Hence, the SIRs for hospitals performing more complex procedures or with larger volumes of trauma or emergency procedures may not be adequately adjusted to account for those patient-specific risk factors

**NTSV - Nulliparous, Term, Singleton, Vertex Cesarean Birth Rate:** The percentage of cesarean (surgical) births among first-time mothers who are at least 37 weeks pregnant with one baby in a head down position (not breech or transverse). Lower values indicate that fewer cesareans were performed in the hospital among primarily low risk, first-time mothers. Limitations: NTSV rates do not take into account certain obstetric conditions, such as placenta previa, that may make Cesarean delivery the safer route for both mother and infant.

**Sepsis Mortality:** Percent of patients, with a severe infection, who die in the hospital. Most sepsis cases (over 90%) start outside the hospital. Lower percentage of death indicates better survival. Limitations: Use of discharge/ administrative data is limiting since such data has lower specificity for diagnoses than clinical data. In addition, without risk adjustment for differences in patient-specific factors, comparing rates among hospitals is difficult.

**VTE - Venous thromboembolism:** The measure of patients who develop deep vein clots who had not received potentially preventive treatment. Limitations: Although not adjusted to account for patient-specific risk factors, this rate is helpful in distinguishing a hospital's adherence to the best practice of administration of appropriate VTE prophylaxis to all appropriate patients.



# Building strong and lasting connections.



## Community Benefit

Each year, Valley Presbyterian Hospital contributes to the community in many ways.



\$4,486,987

Uncompensated charity care

\$5,097,837

Direct community support

55,268

People impacted through VPH Community Benefit Programs



6,525

People attended community education classes



94%

Mothers breastfed their infants in the hospital through First 5 LA's Welcome Baby Program

## Compassion in Action

In Fiscal Year 2019, 83 VPH employees performed 666 community volunteer hours through 37 community agencies and activities. Some examples of activities include feeding the homeless, conducting free community health screenings, collecting food and clothing for the homeless, and donating toys and school supplies to children during the holiday season.

## 50 Community partnerships

We are pleased to acknowledge our local partners, whose efforts we have supported through leadership and collaborative community engagement to improve the health of the San Fernando Valley.

- American Red Cross
- Barlow Respiratory Hospital
- Cal State University Los Angeles
- California State University, Northridge
- Calvary Temple N. Hollywood Community Center for Family Health & Education (FQHC)
- Children's Community School
- College of the Canyons
- Comprehensive Community Health Centers (FQHC)
- Eisner Health (FQHC)
- El Nido Family Centers
- Granada Hills Charter High School
- Greater San Fernando Valley Chamber of Commerce
- Hope of the Valley Rescue Mission
- L.A.U.S.D. - Columbus Elementary; Sun Valley
- Magnet High School
- LA Jewish Symposium
- Learn4life
- Leukemia & Lymphoma Society
- Living Spaces - Van Nuys
- Los Angeles County Economic Development Corporation (LAEDC)
- Los Angeles Daily News
- Los Angeles Valley College
- MEND (Meet Each Need with Dignity)
- Mid-Valley YMCA
- Mission City Community Network (FQHC)
- Mount Saint Mary's University
- National Alliance on Mental Illness (NAMI)
- Northeast Valley Health Corporation
- ONEgeneration
- Operation Gratitude - Care Packages for Troops
- Ovarian Cancer Coalition of Greater California
- Pacoima Beautiful
- Partnerships to Uplift Communities (PUC Schools)
- Pierce College
- San Fernando Community Health Center (FQHC)
- San Fernando Valley Mental Health Center
- San Fernando Valley Rescue Mission
- Shepherd of the Hills Church
- Social and Environmental Entrepreneurs
- Southern California Medical Group (SCMG)
- Tarzana Treatment Centers
- Tierra Del Sol
- Valley Care Community Consortium
- Valley Community Healthcare (FQHC)
- Valley Family Center
- VEA (Valley Economic Alliance)
- VICA (Valley Industry and Commerce Association)
- West Coast Sports Medicine Foundation
- West Coast University
- West Valley Family YMCA



# Expanding our circles of support.

## Legacy Circle

**Patron**  
Robert I. Schueler

**Benefactor**  
Jean & David Fleming

**Friends**  
Betty & Arthur D. Aston  
Lelah B. Balmagia  
Robert H. Dilworth  
Rose & William W. Edwards  
Marilyn & Donald Fetherolf  
Marianna Fuller  
Victor Gehrig  
Martha E. Hand  
Pegi Matsuda & Larry Haworth  
Harry Hodgson, Jr.  
Mabel & Cecil Love  
Constance & John F. Mann  
Evelyn & Joseph Pertusati  
Martha & Richard D. Poast  
Myrtle & Russell Quisenberry  
Barney C. Ruben  
Martha & Robert D. Selleck  
Carol & Stuart Solomon  
Othmar J. Steioff  
Crystal & Roland Tuplin  
Patricia & Donald Van Atta

## President's Circle

**Gold: \$50,000 and above**  
David & Jean Fleming

**Silver: \$20,000-\$49,999**  
Joseph U. Oswald

**Bronze: \$5,000-\$19,999**  
Rini-Sultana & Gustavo Valdespino  
Jim & Beth Zachary

**Friends of the President's Circle: \$1,000 - \$4,999**  
Jeffrey & Linda Allport  
Jeffrey & Dr. Lori Burnell  
Chris & Lori Cardle  
Dr. Dexter & Dr. Erlinda Grey  
Jeff Horn  
Richard A. Hudson  
Richard Katz  
Korey & Janice Klostermeier  
Dick & Priscilla Marconi  
Pegi Matsuda & Larry Haworth  
Robert C. Myrtle, PhD  
Ellen G. Riley



Left to right: Emcee State Senator Robert Hertzberg; Honoree David Fleming recipient of the Excellence in Community Service award; and Hospital President & CEO Gustavo Valdespino

## Physician Circle

**Gold: \$10,000 and above**  
Anonymous  
Emergent Medical Associates

**Silver: \$2,000-\$9,999**  
Ronald J. Belczyk, DPM  
Gnana M. Desigan, MD  
Dennis Kasimian, MD  
Peter J. Koetters, MD  
Thomas J. Lomis, MD  
Diego Mechoso, MD  
Brian Ostick, MD  
Renaissance Imaging Medical Associates, Inc.  
San Fernando Valley Medical Group  
Farid Yasharpour, MD

**Bronze: \$500-\$1,999**  
Ashwani Bhardwaj, MD  
Nicholas Di Domenico, MD  
Shahram Farahvash, MD  
Hany Farid, MD  
Jason Greenspan, MD  
IMEG Corp.  
Todd D. Moldawer, MD  
Ganesh Pandian, MD  
Llorens Pembrook, MD  
Sridhar Ramachandran, MD  
Kevin Rice, MD  
Mark S. Romoff, MD  
Michael G. Ross, MD  
Sylvain Silberstein, MD  
Liva Yates Gritton, MD

## Corporate Circle

**Gold: \$10,000 and above**  
Barlow Respiratory Hospital  
Children's Hospital Los Angeles  
Dume Wolverine Foundation  
Geva Construction, Inc.  
Payden & Rygel Investment Management  
Preferred Partners Insurance Agency  
Wells Fargo Bank

**Silver: \$5,000 - \$9,999**  
Adventist Health Southern California  
Anthem, Inc.  
Cedars-Sinai Medical Center  
Columbia Steel, Inc.  
Community Family Care, IPA  
Conifer Health Solutions  
Cross America Financial, LLC  
Delta Health Systems  
Dummit, Buchholz & Trapp  
The Fulcrum Group  
Health Care LA, IPA  
Health Net Foundation  
Joe's Auto Parks  
Lockton Insurance Brokers, LLC  
Medline Industries, Inc.  
MedPOINT Management  
MetLife  
OneLegacy  
Preferred IPA of California  
RBB Architects Inc.  
Seyfarth Shaw LLP  
Weingart Foundation

**Bronze: \$1,000 - \$4,999**  
ADK America  
Allied Universal  
Ascom  
AutoAid Auto Repair & Collision Care  
AV Construction  
Blue Shield of California Promise Health Plan  
BNY Mellon Wealth Management  
California State University, Northridge Foundation  
CBRE  
Center for Family Health & Education, Inc.  
Chandler Partners

CloudWave  
Concorde Career College  
Crothall Healthcare Facilities  
Eisner Health  
Engage  
Envision Healthcare  
Essential Biologics, Inc.  
Forward Advantage, Inc.  
Glen Med  
Healogics  
Healthcare Revenue Management Group  
Heritage Provider Network/Regal Medical Group  
Hooper, Lundy & Bookman, P.C.  
Imprivata  
Interstate Rehabilitation Services  
James + Gable Insurance Brokers, Inc.  
LA Care Health Plan  
Lake Balboa Care Center  
Lancaster Pollard  
Layton Construction Company, LLC  
Littler Mendelson Foundation, Inc.  
Los Angeles Daily News  
Los Angeles World Airports - Van Nuys  
MEDICO Healthcare Linen Service  
Moore & Associates  
Northeast Valley Health Corporation  
PIH Health  
Proficio, Inc.  
Q-Centrix  
R.A. Fischer  
Renovo Solutions  
Richard Katz Consulting  
RICOH  
RxBenefits  
Savely Healthcare Architects  
Sobin-Harte Architects, Inc.  
SoCal Spine, Inc.  
Southern California Gas Company  
Strategic Building Services  
Summit Healthcare Services, Inc.  
Tarzana Treatment Centers, Inc.  
Tech Electric  
TelMedIQ/PerfectServe  
Tierra Del Sol  
UCLA Health  
Wesely-Thomas Enterprises, Inc.  
WP Electric & Communications, Inc.



## Goal Getters

We believe our 1,700 employees are one of our greatest assets, and we are grateful to have more than 1000 who generously give back to the hospital through our Goal Getters employee giving program. Collectively, these dedicated employees represent one of the hospital's largest donors. Through the financial support of our Goal Getters program, the hospital has funded equipment and programs that make a difference in the health and well-being of the patients we serve.

## Grants

Brave Beginnings  
Child's Play  
First 5 LA  
Lon V. Smith Foundation  
The Ralph M. Parsons Foundation  
Wells Fargo Foundation



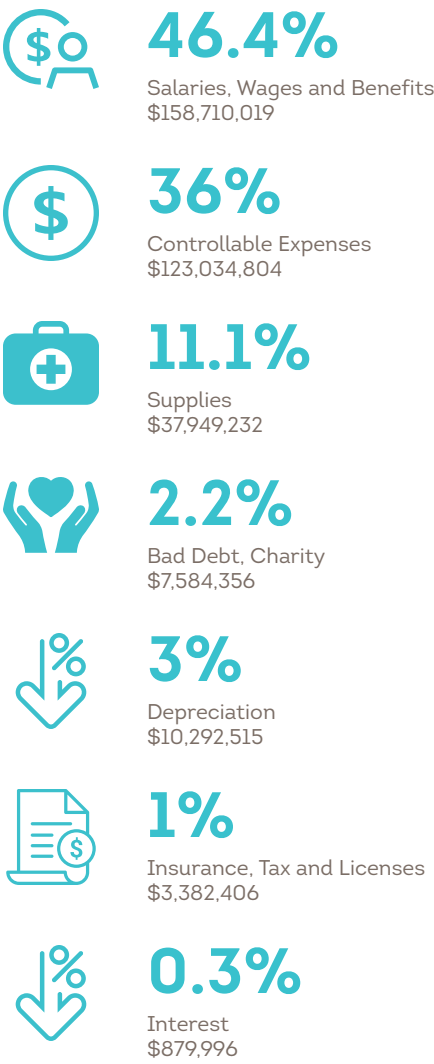
Left to right: Hospital Chief Medical Officer Dr. Clyde Wesp; Honorees from Emergent Medical Associates Dr. Jason Greenspan; Dr. Mark Bell; Dr. Brian Ostick (far right); with Hospital President & CEO Gustavo Valdespino.



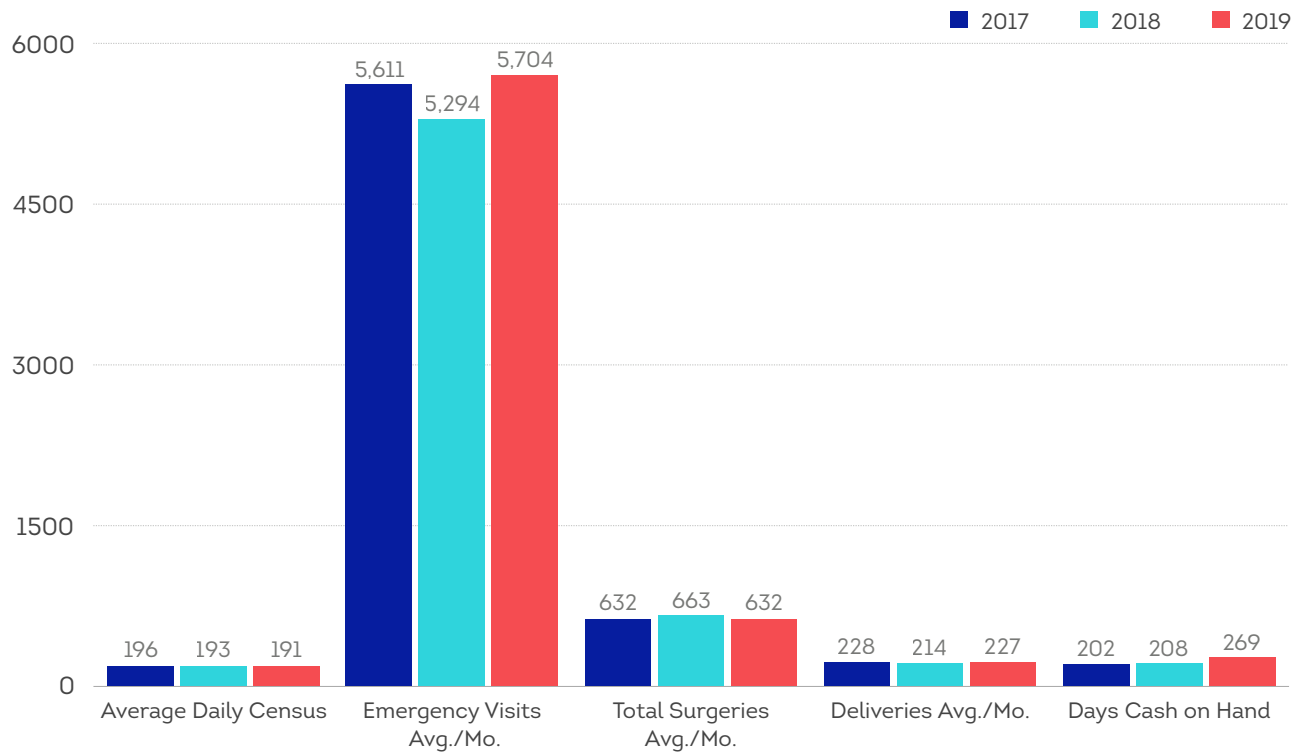
# Caring for the business of healthcare.

The following data presents financial, operational, and utilization statistics over a 12-month period, ending with December 31, 2019.

## 2019 Use of Funds



## 2019 Key Statistics







Our Mission

To improve the quality of health in the San Fernando Valley

Our Vision

Excellence in all we do

Core Values

- Demonstrate dignity and respect for all individuals
- Deliver compassionate and patient-centric care that addresses diverse cultural needs
- Create and maintain a quality environment that allows physicians and employees to succeed
- Show pride in providing community-based health care
- Promote trust and transparency
- Encourage collaboration in the workplace

Governing with a clear mission.

Board of Directors

- David Adelman, Secretary  
Partner, Greenberg & Bass, LLP

Dan Chandler  
President, Chandler Partners

David W. Fleming, Chairman Emeritus  
Special Advisor, Office of State Senator Robert Hertzberg

Alex Guerrero, Treasurer  
Chief Development Officer, VEDC

Dianne F. Harrison, PhD  
President, California State University, Northridge

Luca Jacobellis  
President, Cal Net Technology Group

Gregory L. Kay, MD, Chairman of the Board  
Community Representative
- Peter J. Koetters, MD  
Physician, Valley Presbyterian Hospital

Merryll McElwain  
Wealth Director, BNY Mellon Wealth Management

Matthew Mischel, MD  
Physician, Valley Internal Medicine & Nephrology Medical Group

Todd D. Moldawer, MD  
Physician, Southern California Orthopedic Institute (SCOI)

Robert C. Myrtle, DPA  
Professor Emeritus, University of Southern California

Ganesh Pandian, MD  
Medical Director of Cardiology, Valley Presbyterian Hospital
- Kevin M. Rice, MD, Chief of Staff  
Medical Director of Radiology, Valley Presbyterian Hospital

Ellen Riley  
Senior Vice President, Kaufman, Hall & Associates, LLC

Diana Sanchez  
Director of Public & Community Relations, Los Angeles World Airports – Van Nuys

Keven Steinberg  
Partner, Steinberg Law

Gustavo Valdespino  
President & CEO, Valley Presbyterian Hospital

Beth Zachary  
Healthcare Executive, Retired

Executive TEAM

- Gustavo Valdespino  
President & CEO
- Lori Cardle  
Senior Vice President of Operations & Chief Operating Officer
- Janice Klostermeier  
Senior Vice President & Chief Financial Officer
- Clyde Wesp, MD  
Senior Vice President and Chief Medical Officer
- Lori Burnell, RN, PhD, NEA-BC  
Senior Vice President & Chief Nursing Officer
- Jeff Allport  
Vice President & Chief Information Officer
- Deborah Gac\*  
Vice President of Human Resources
- Keith Stanhill\*\*  
Vice President of Human Resources

Medical Executive Committee

- Medical Staff Officers
- Kevin M. Rice, MD  
Chief of Staff
- Peter J. Koetters, MD  
Vice Chief of Staff
- Brian J. Ostick, MD  
Secretary/Treasurer
- Members at Large
- Farshad Malekmehr, MD
- Sanjay V. Vadgama, MD
- James R. Higgins, MD
- Michael A. Polisky, MD
- Nellie R. Ekmekjian, MD
- Borna Solomon, MD
- Medical Departments & Representatives
- Division of Anesthesiology  
Shahram S. Farahvash, MD
- Division of Cardiology  
Michael N. Hakimi, DO
- Department of Emergency Medicine  
Brian J. Ostick, MD
- Department of Medicine  
Kalpesh S. Patel, MD
- Department of Obstetrics/Gynecology  
George M. Delshad, MD
- Department of Pathology  
Dennis Kasimian, MD
- Department of Pediatrics  
Diego A. Mechoso, MD
- Division of Radiology  
Kevin M. Rice, MD
- Department of Surgery  
Samuel Kashani, MD

\*Resigned in May 2019 \*\*Appointed September 2019





Valley Presbyterian Hospital (VPH) is an independent, nonprofit and nonsectarian hospital serving the medical needs of the San Fernando Valley community for more than 60 years. VPH has grown to become one of the largest acute care hospitals in the greater San Fernando Valley region and continues to provide patient-centered care for a healthy community. The 350-bed facility offers advanced technology and a full range of medical services to improve and save lives.

For more information, visit [valleypres.org](http://valleypres.org).