



VALLEY PRESBYTERIAN  
HOSPITAL

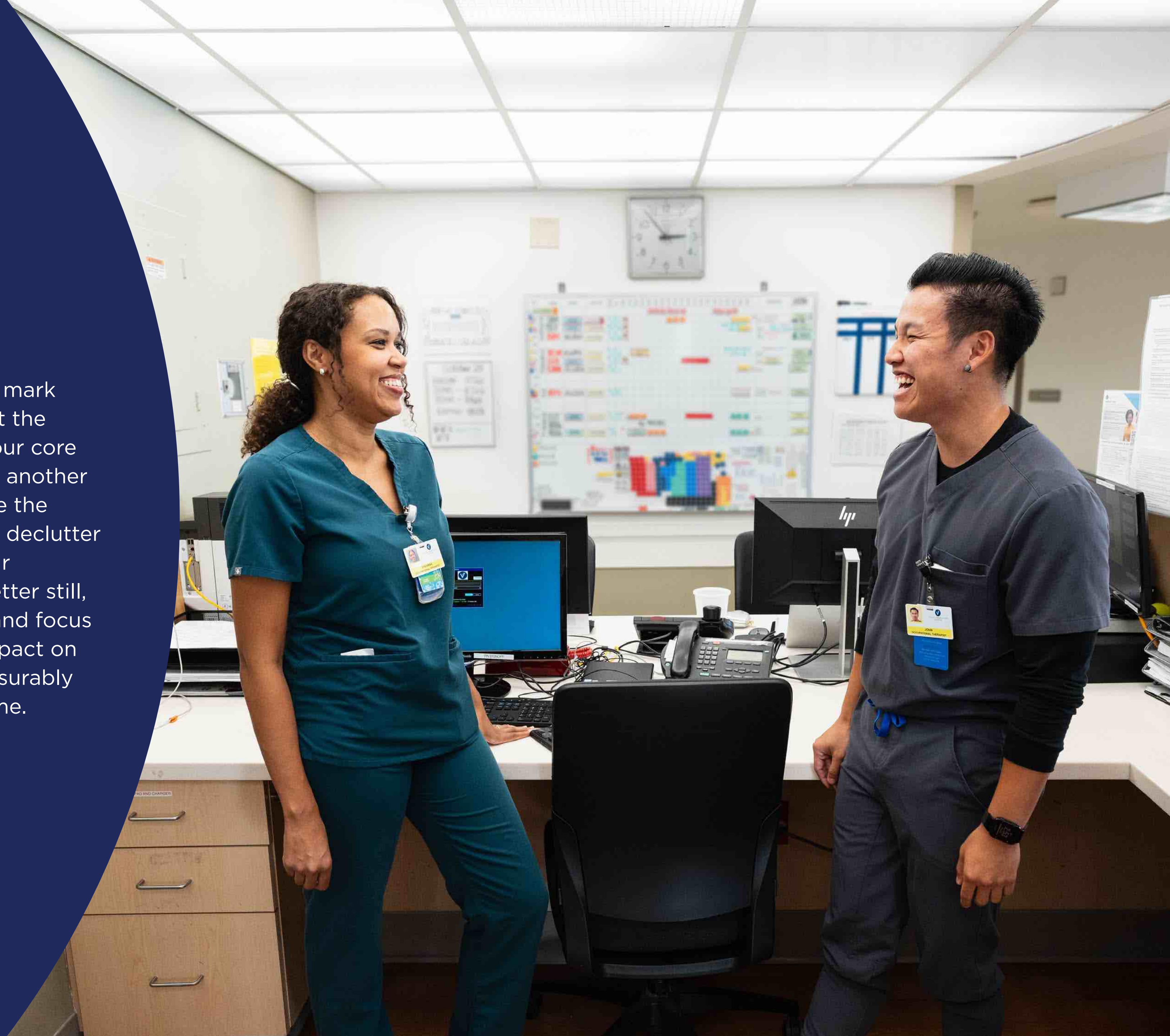
ANNUAL REPORT 2023

# STRONG TO THE CORE



A fresh look. A refined set of values.

2023 began with a new look for the hospital in a brand mark and visual system more fitting of who we are today. But the change was not solely cosmetic, as we also simplified our core values from many to just 3: treat with respect, help one another and get better, every day. Together, these changes were the culmination of a significant behind-the-scenes effort to declutter and simplify our physical spaces, our processes, and our objectives for the sake of clarity and understanding. Better still, the combined benefit of clarity through simplification and focus along with a renewed sense of purpose had a direct impact on employee and patient satisfaction which has been measurably significant, trends we hope to continue for years to come.







To our community,

The past year marked a period of transformation and renewal at our hospital. As we embraced a refreshed logo and visual system and a refined and more contemporary set of core values, we put ourselves in the best position to focus on what truly matters: treating with respect, helping one another, and getting better every day.

This process of simplification and clarification was in many ways a necessary and natural evolution that allowed us to apply the lessons learned during the pandemic and drive harder toward regaining a sustainable and consistent level of performance.

As we help one another, employee satisfaction is on the rise. As we treat with respect, patient satisfaction is on the rise. And as we get better every day in improving the quality and safety of care, outcomes are improving and the health of our organization continues to improve. Together, these efforts are vital components in achieving our mission to be an asset to our community.

Together, we will continue to thrive and serve with unwavering dedication.

Warm regards,

Kalpesh Patel, MD  
Chief of Staff

Gregory L. Kay, MD  
Chairman of the Board

Gustavo Valdespino  
President & CEO





# OUR SERVICES

## Acute Rehabilitation Services

We provide patients with acute rehabilitation needs with an interdisciplinary team that delivers holistic, patient-centered care. Led by a board-certified physical medicine and rehab physician, the team includes 24-hr on-call nurses, physical therapists, a neuropsychologist, and a broad range of specialists.

## Children’s Services

We provide compassionate and specialized pediatric care including a neonatal intensive care unit (NICU) Level III, a pediatric intensive care unit (PICU) and a designated Pediatric Medical Center. Each member of our pediatric care team shares a family-centered approach to providing the treatment and support needed for positive outcomes. We are equipped to serve the individual health care needs of children from newborn to age 18.

## Emergency Services

With several designations, our emergency services continues to demonstrate our commitment to excellent care. As a certified cardiac receiving center for heart attack patients, our specialists collaborate to provide critical care within 90 minutes of the onset of chest pain. In addition, our facility is a certified Primary Stroke Center. We have a dedicated stroke-focused program staffed by qualified, specially trained medical professionals who use advanced technologies to act quickly and save lives. Our Emergency Department is also designated as an Emergency Department Approved for Pediatrics, with expedited and specialized care for pediatric patients.

## Heart & Vascular Services

We offer a full range of cardiac services to quickly and accurately diagnose and treat patients suffering from critical heart and vascular conditions. An expert, multidisciplinary medical team is dedicated to acting quickly and saving patients’ lives.

## Maternity Services

Our Maternity Services Department delivers over 2000 babies per year in the San Fernando Valley. We offer a family-centered approach and are dedicated to providing comfort and support through the journey of pregnancy, birth and early parenthood.

## Outpatient Services

We offer many outpatient services through our general and gastrointestinal laboratories, Radiology/Imaging Department and therapy programs, including occupational, physical, respiratory and nuclear medicine.

## Surgery Services

We provide a broad range of surgical services representing a wide array of specialty areas. Our physicians and surgical services staff have the tools and advanced technology they need to perform a full range of surgical procedures and to deliver the highest quality of care.

## Wound Services

In our Center for Wound Healing, our disciplinary approach brings together expertise of vascular and pediatric surgeons and other specialized support professionals in a state-of-the-art setting. For chronic wounds that have not benefited from traditional methods, our treatments include advanced diagnostic testing, debridement, advanced wound-dressing technology, negative pressure therapy and many others.



## From volunteer to staff

Lesly Ghiglino started as a volunteer in 2009 while attending CSULA. Lesly was always passionate about the healthcare environment and following this career path. Those in 4 West who she worked with found her to be caring and extremely helpful, rounding on patients and giving out water and other supplies. Then, after completing and receiving her RN degree, Lesly completed a new grad program, and was subsequently hired as a nurse in Telemetry here at VPH. But Lesly wasn't done there. She became a nursing supervisor and continued to go to school. Now, Lesly is one of our Nurse Practitioner/Hospitalist and in addition to her technical skills, she also brings bilingual capability and a deep compassion for her patients. It's a full circle journey, from growing up in this community, contributing as a volunteer and then coming back to care for others in the community. We are so proud of this home-grown talent!

"I grew up in the San Fernando Valley and now to be working at VPH after volunteering here and helping my community is so deeply rewarding."

– Lesly Ghiglino, Nurse Practitioner/Hospitalist

*Photo, from left: Lesly Ghiglino  
and Virginia Rivero Napoles,  
Director of Volunteer Services*







# COMMUNITY BENEFIT



\$3,908,738

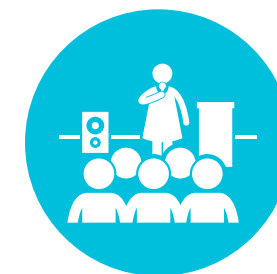
Charity Care

\$8,468,647.77

Direct Community Support

69,919

People Impacted



907

Participants who attended  
our community classes



92%

Of mothers who are part of the  
First 5 LA's Welcome Baby Program  
breastfed their infants in the hospital.

## Community Partners

African American Infant Maternal  
Mortality Coalition  
Alzheimer's Association  
American Heart Association  
Barlow  
Breastfeed LA  
Child Development Institute  
Children's Dental Clinic  
Clinica Romero  
Columbus Elementary School  
Comprehensive Community Health  
Centers  
Eisner Health Centers  
El Centro de Amistad  
Eyes of a Mother  
Fit 4 the Cause  
Greater San Fernando Valley Chamber  
Hope of the Valley  
Kidney Quest Foundation  
LA Care Community Resource Center  
LA Food Bank  
Leukemia & Lymphoma Society  
Meals in Motion  
MEND  
Mid Valley YMCA  
Mindful Veteran Project  
NEV Best Start  
NEW Economics for Women  
North Valley Caring Services  
Northeast Valley Healthcare  
Corporation  
OneGeneration  
Ovarian Cancer Coalition of Greater  
California  
Pacoima Charter Elementary  
Partners in Care Foundation

Power of Sight Foundation  
San Fernando Valley Breast Cancer  
Foundation  
San Fernando Valley Community  
Mental Health Center  
San Fernando Valley Rescue Mission  
Serra Medical Clinic  
Southern CA Medical Group  
Tarzana Treatment Center  
The Orphan Project  
Tia Chucha's Cultural Center  
Tierra Del Sol  
Valley Community Care Consortium  
Valley Community Healthcare  
Valley Cultural Arts Foundation  
Valley Economic Alliance  
Valley Family Center  
Valley Village  
Vida Mobile  
Vision y Compromiso  
West Valley YMCA

## Compassion in Action

In Fiscal Year 2023, 140 VPH  
employees performed over 100  
community volunteer hours through  
27 community agencies and activities.  
Some examples of activities include  
health screenings, food distribution,  
meal delivery, feeding the homeless,  
and donating toys and school supplies.





## Helping our community eat healthier

Young people come to the hospital for all kinds of reasons. From broken bones to flu shots to cooking classes. Yes, that's right, cooking classes. That's because at VPH, our commitment to our community includes supporting charitable organizations that make an impact in our neighborhoods like Meals in Motion. Fighting food insecurity, Meals in Motion led by Chef Nicholas Doran educates on healthy food choices, budgeting and food safety including providing hands-on cooking classes to underserved communities.

Two such young men are Ethan and Lars Ruelas. They have both participated in the culinary classes taught by Meals in Motion and hosted here at VPH. Besides being exposed to new ingredients, they have learned how to prepare them in new recipes that are delicious, healthy and wallet-friendly.

"It's rewarding to be a part of the next generation of our community learning new skills, like cooking, that will help them and their families live healthier and bond together while cooking."

– Gilbert Podesta, Director of Business Development

Their mother, Jennifer Ruelas, is pleased that her sons have the opportunity to learn new skills that benefit their whole family. And for Ethan, his experience has sparked an interest to pursue culinary training at his high school and perhaps beyond!

*Photo, from left: Ethan, Jennifer and Lars Ruelas, Gilbert Podesta*



# DONOR COMMUNITY

## President's Circle

### Bronze: \$5,000-\$19,999

Gustavo and Rini Sultant-Valdespino

### Friends of the President's Circle: \$1,000-\$4,999

Alex Guerrero  
Beth & Jim Zachary  
Dan Chandler  
Ellen G. Riley  
James Pietsch  
Jeff Horn  
Lori Cardle  
Mary Beth Walker  
Montoria Watley  
Tony & Miriam Evans  
Tyrone Waller

## Physician Circle

### Gold: \$10,000 and above

Muhammad Anwar, MD

### Silver: \$2,000-\$9,999

Bolatito Abe, MD  
Peter J. Koetters, MD  
Shahram Farahvash, MD  
Thomas Lomis, MD

### Bronze: \$500 - \$1,999

Brian and Amy Ostick, MD  
Diego Mechoso, MD  
Hannah Grossman, MD  
Kevin Rice, MD  
Liva Yates Gritton, MD

## Corporate Circle

### Gold: \$10,000 and above

Dume Wolverine Foundation  
Pacific Healthworks  
Payden & Rygel Investment  
Management  
Preferred IPA of California  
Preferred Partners Insurance Agency

### Silver: \$5,000 - \$9,999

Anthem, Inc.  
Barlow Respiratory Hospital  
Cedars-Sinai Medical Center  
Clumeck Stern Schenkelberg & Getzoff  
Community Family Care, IPA  
Geva Construction, Inc.  
LA Care Health Plan  
LifePoint Rehab, LLC.  
Lockton Insurance Brokers, LLC.  
MedPOINT Management  
RBB Architects, Inc.  
Seyfarth Shaw LLP  
Wesely-Thomas Enterprises, Inc.

### Bronze: \$1,000 - \$4999

Clear Water Security  
CloudWave  
Dummit, Buchholz & Trapp  
Eisner Health  
Elevance Health, Inc.  
Fidelity Charitable  
First Med Ambulance Services, Inc.  
Heritage Provider Network / Regal  
Medical Group  
Hooper, Lundy & Bookman, P.C.  
Interstate Rehabilitation Services  
Joe's Auto Parks  
LifePoint Rehab, LLC.  
Marvel Path  
Morgan & Leahy  
Nordic Global Consulting

NWN Carousle  
P & H Metal Products  
R.A. Fisher  
RxBenefits  
SoCal Spine, Inc.  
Steinberg Law  
The Henenhan Company  
Wells Fargo Foundation  
Western Drug Medical Supply

## Grants

Littler Mendelson Foundation, Inc.  
Mutual of America Foundation  
Weingart Foundation

## Goal Getters

We believe our 1,700 employees are our greatest assets, and we are grateful to have more than 800 who generously give back to the hospital through our Goal Getters employee giving program. Collectively, these dedicated employees represent one of the hospital's largest donors. Through the financial support of our Goal Getters program, the hospital has funded equipment and programs that make a difference in the health and well-being of the patients we serve.

# FINANCIALS

The following data presents financial, operational and utilization statistics over a 12-month period, ending with December 31, 2023.

## 2023 Use of Funds



**56.3%**  
Salaries, Wages & Benefits  
\$196,573,142



**3.7%**  
Depreciation  
\$12,823,607



**23.4%**  
Controllable Expenses  
\$81,862,674



**1.4%**  
Insurance, Tax & Licenses  
\$4,940,976



**13.2%**  
Supplies  
\$46,230,858



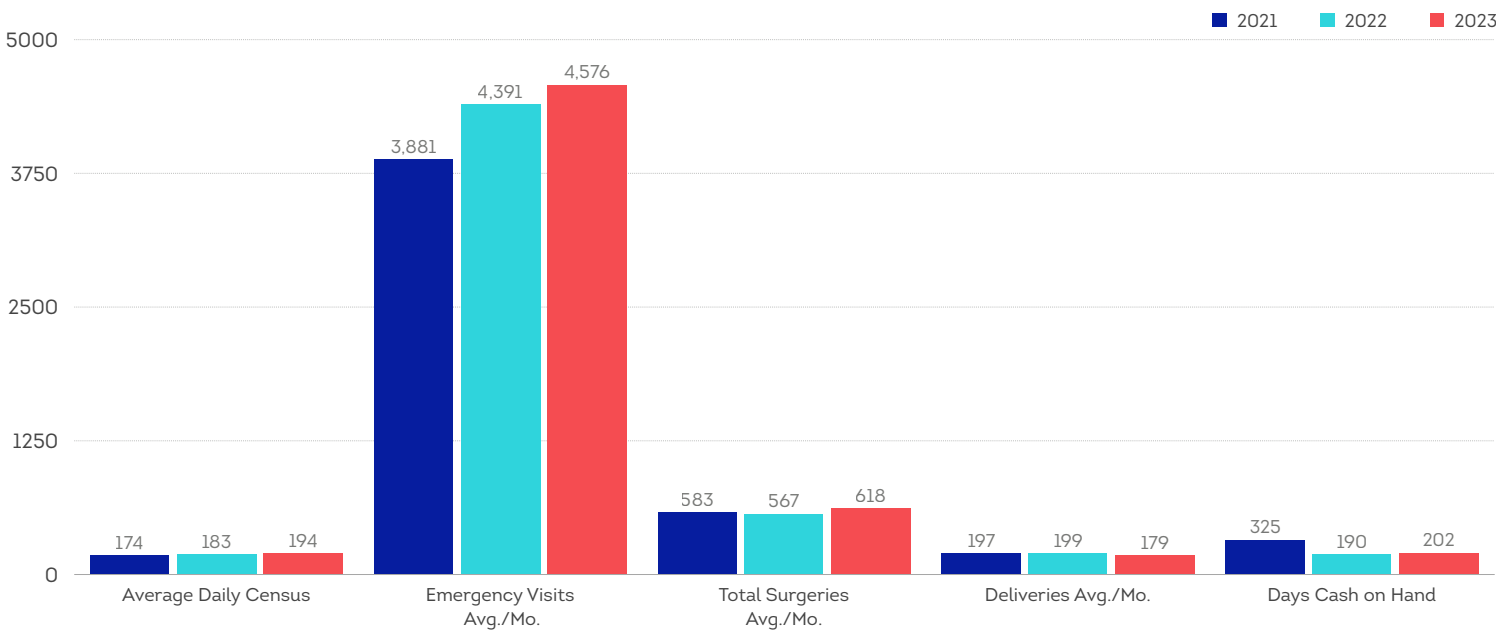
**0.0%**  
Interest  
\$102



**2.0%**  
Bad Debt/Charity  
\$6,817,999



## 2023 Key Statistics





## A child in vital need

When a small child under the age of two was brought into our ED by his parents, the situation appeared unremarkable. The stated reason for the visit was for “swelling of the leg.” The parents thought this might be a reaction to something, possibly from a vaccination.

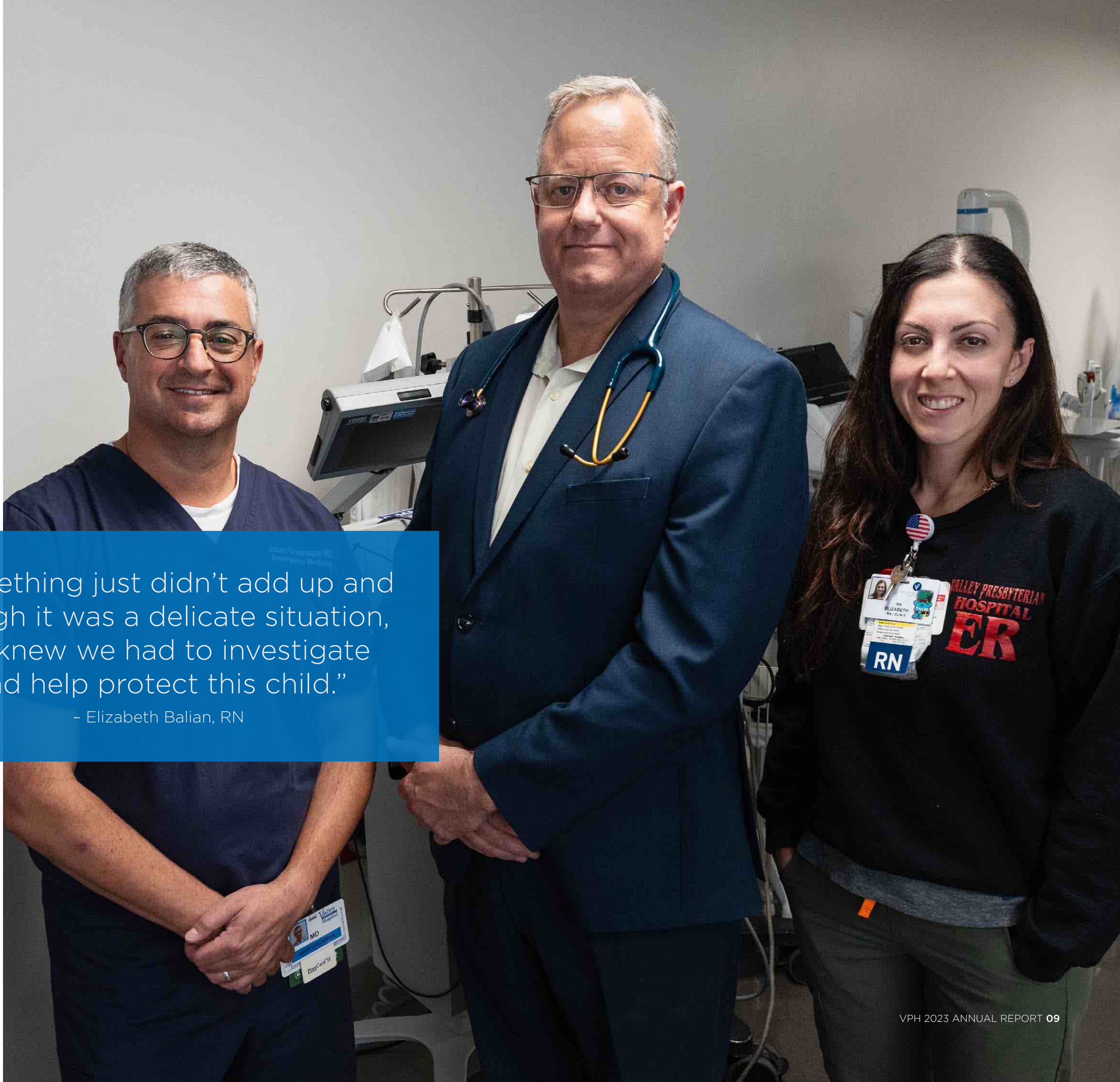
After initial imaging results identified a fracture of the leg, the team began to think that things just did not add up in this case. Both Dr. Jason Greenspan and Emergency Department nurses Elizabeth Balian and Katherine Canas had that uncomfortable feeling that something was not right. They called in Dr. Peter Koettters for consultation. A full body scan was then ordered, and it revealed that the child had multiple fractures in varying stages of healing.

As is customary in these cases, Social Services was consulted, and Lead Social Worker Sossy Agopian worked with the family and Child Protective Services. Because of the extent of the injuries, the child was transferred to another facility for a higher level of care. It was later relayed from the other facility that even more injuries were identified and that the actions of our team likely saved the young patient’s life.

The parents have been removed from the picture and the child is safe and healing.

We are proud of all those involved in the care and protection of this patient. The ability to apply experience with compassion undoubtedly saved this child’s life and spared him further pain and suffering. In his vital moment of need, the VPH family made a difference!

*Photo, from left: Dr. Jason Greenspan, Dr. Peter Koettters, Elizabeth Balian, RN*



“Something just didn’t add up and though it was a delicate situation, we knew we had to investigate and help protect this child.”

– Elizabeth Balian, RN



# LEADERSHIP

## Board of Directors

Greg Kay, MD, Chairman of the Board	Alex Guerrero
Beth Zachary Vice Chair of the Board	Brian Ostick, MD
David Fleming Chairman Emeritus, Special Advisor	Dan Chandler
Luca Jacobellis Secretary of the Board	Ellen Riley
Bolatito Abe, MD Medical Staff's Secretary/Treasurer	Keven Steinberg, Esq.
Kalpesh Patel, MD Medical Staff's Chief of Staff	Liva Yates-Gritton, MD
	Mary Beth Walker, PhD
	Peter Koetters, MD
	Sanjay Vadgama, MD

## Executive Team

Gustavo Valdespino President & Chief Executive Officer
Lori Cardle Executive Vice President & Chief Operating Officer
Charles Orlando Senior Vice President & Chief Financial Officer
Hannah Grossman, MD Senior Vice President & Chief Medical Officer
Lori Burnell, RN, PhD., NEA-BC Senior Vice President & Chief Nursing Officer
Tanzaneka Buckor Interim Chief Nursing Officer
Tamala Choma, Esq. MS CCC-SLP Vice President & General Counsel
Tony Evans Vice President & Chief Information Officer
Diana Milan-Finley Associate Administrator, Operations Support Services
Todd Connelly Associate Administrator, Human Resources
Lisa Allen Interim Vice President, Human Resources

## Medical Executive

<b>Officers</b>
Kalpesh Patel, MD Chief of Staff
Bolatito Abe, MD Vice Chief of Staff
Brian Ostick, MD Immediate-Past Chief of Staff

## Department Chairs

Nicholas Borm, MD Emergency Medical Services
Shahram Farahvash, MD Anesthesiology
Julianne Harrison, DO Pediatrics
Sanket Kunde, MD Medicine
Michael Legmann, MD Pathology
Farshad Malekhmehr, MD Surgery
Marcelo Spector, MD Radiology
Sanaz Tafti, MD Obstetrics and Gynecology
Georges Tanbe, MD Cardiology

## Members-at-Large

Nellie Ekmekjian, MD
Nima Rabbani, DO
Heather Shenkman, MD
Sanjay Vadgama, MD