



2015 | Annual Report

VALLEY
PRESBYTERIAN
HOSPITAL

Excellence in all we do



About Valley Presbyterian Hospital

Valley Presbyterian Hospital (VPH) is an independent, nonprofit and nonsectarian hospital serving the medical needs of the San Fernando Valley community for more than 50 years. VPH has grown to become one of the largest acute care hospitals in the Valley region and continues to provide patient-centered care for a healthy community. The 350-bed facility offers advanced technology and a full range of medical services to improve and save lives. For more information, visit www.valleypres.org.

Mission, Vision and Values



Our Mission

To improve the quality of health in the San Fernando Valley

Our Vision

Excellence in all we do

Core Values

Demonstrate dignity and respect for all individuals

Deliver compassionate and patient-centric care that addresses diverse cultural needs

Create and maintain a quality environment that allows physicians and employees to succeed

Show pride in providing community-based health care

Promote trust and transparency

Encourage collaboration in the workplace

A Message to Our Community

Valley Presbyterian Hospital is proud to be the only independent, nonprofit hospital in the San Fernando Valley. For more than 50 years, we have been motivated by our mission to improve the quality of health in our local community, where the needs continue to grow and change.

As a community-owned hospital, we provide a wide range of medical services and offer access to health education and health-related resources, close to home. Each month, on average, we treat more than 5,500 patients through our emergency room, perform more than 560 surgeries and welcome approximately 280 births. Our Board of Directors, 1,600 employees and more than 500 physician partners are truly honored to collaborate around our mission of quality and service.

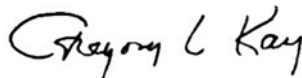
In FY 2015, we continued to expand our services to meet the needs of our patients. We launched a telepsychiatry program to provide access to mental health care services, addressing a critical need in the community. We also introduced two new outpatient centers, including one that offers advanced neurospine surgical treatments and another that provides hyperbaric oxygen therapy for wound healing. In our Emergency Department, we redesigned our processes to ensure a safer, faster and more coordinated patient experience. To close out FY 2015, our Board of Directors approved a three-year capital spending plan totaling more than \$50 million. The plan includes major infrastructure improvements, an \$8.4 million renovation and expansion of the Emergency Department, support for information technology, and clinical enhancements designed to improve the experience of our patients, staff and physicians.

We are deeply grateful to our patients for entrusting us with their care. Our gratitude also extends to a strong network of local partners and donors who offer their generous support. These relationships are vital to our success and to the health of the patients and families we serve. Together, we make a difference in the lives of those we serve and remain focused on our promise of excellence in all we do.

Best regards,



Gustavo Valdespino, President & CEO



Gregory L. Kay, MD, Chairman of the Board



Sukshma Sreepathi, MD, Chief of Staff

Excellence in all we do.

Valley Presbyterian Hospital



Our Services

Amputation Prevention Center The Amputation Prevention Center at Valley Presbyterian Hospital is among only a few facilities nationwide that brings together the interdisciplinary expertise of vascular and podiatric surgeons with limb-salvage and wound-management specialists in a state-of-the-art setting. Patients with at-risk limbs receive integrated care in our 11,257-square-foot facility, featuring the latest equipment and instruments to perform limb-saving procedures.

Children's Services When a child is sick or injured, we provide compassionate and specialized pediatric care. Each member of our pediatric care team shares a patient- and family-centered approach, providing the treatment and support needed for positive outcomes. Our facility is equipped to serve the individual health care needs of children from newborn to age 18. Children's Services at Valley Presbyterian Hospital encompasses three units:

- **25-bed Pediatric Care Center (PCC) for children with serious conditions**
- **10-bed Pediatric Intensive Care Unit (PICU) for critically-ill children**
- **32-bed Level III Neonatal Intensive Care Unit (NICU) for critically-ill newborns**

Every child admitted to Valley Presbyterian Hospital receives the full attention of a multidisciplinary team of highly skilled pediatric physicians and care specialists. Our medical team includes physicians, pediatric nurses, a child life specialist, social services representatives, respiratory therapists, pharmacists and case managers, who all work together to deliver high-quality, coordinated care.

Emergency Services Our Emergency Services department plays a critical role in serving the community and has several designations that demonstrate our commitment to excellent care. As a certified cardiac receiving center for heart attack patients, our heart specialists collaborate to provide critical care within 90 minutes of the onset of chest pain. In addition, our facility is a certified Primary Stroke Center, based on our response to critical patient conditions. We have a dedicated stroke-focused program staffed by qualified medical professionals who are specially trained in stroke care and who use advanced technologies to act quickly and save lives. Our emergency department also offers an expedited process to provide care for adult and pediatric patients with urgent but not life-threatening needs.

Heart & Vascular Services We offer a full range of cardiac services to quickly and accurately diagnose and treat patients suffering from critical heart and vascular conditions. An expert, multidisciplinary medical team is dedicated to acting quickly and saving patients' lives. Our Fritz B. Burns Valley Cardiac Catheterization Lab is one of the Valley's most technologically advanced and best equipped facilities. We also offer a cardiac rehabilitation and fitness center for medically supervised exercise, dietary and lifestyle counseling.

Hepatobiliary & Pancreas Center Our state-of-the-art center provides treatments to address a wide range of liver, bile duct and pancreas disorders. We offer a highly specialized program to address the needs of patients with such rare and complex disorders.

Maternity Services Our Little Treasures Maternity Services department delivers more babies than any other hospital in the San Fernando Valley. We offer a family-centered approach and are dedicated to providing comfort and support through the journey of pregnancy, birth and early parenthood. Our highly trained, compassionate staff includes a 24-hour on-call obstetrician who is at the hospital to handle deliveries and emergencies, if the need arises. Our Perinatal Center serves women with high-risk pregnancies and offers non-stress tests, ultrasounds and fetal echocardiogram services, as well as high-risk infant follow-up services under one roof.



Our Services



Neurospine Surgery Center The Neurospine Surgery Center of Valley Presbyterian Hospital focuses on advanced, minimally invasive spinal treatments that restore and preserve the range of motion in the spine. Our Center offers treatments for conditions of all areas of the spine, including laminoplasty, nerve decompression, microdiscectomy and total disc (artificial disc) replacements.

Outpatient Services We offer many outpatient services through our general and gastrointestinal laboratories, radiology/imaging department and therapy programs, including occupational, physical, respiratory and nuclear medicine.

Surgery Services We provide a broad range of surgical services representing a wide array of specialty areas. Our physicians and surgical services staff have the tools and advanced technology they need to perform a full range of surgical procedures and to deliver the highest quality of care. Many procedures involve minimally invasive techniques with smaller incisions, which can minimize pain and shorten recovery times.

Valley Hip & Knee Institute At the Valley Hip and Knee Institute, we specialize in the latest joint replacement techniques and minimally invasive procedures, helping patients to regain their mobility and resume the activities they love. Together with a dedicated care team, our orthopedic specialists quickly get patients back on their feet.

Wound & Hyperbaric Center Our expert, multidisciplinary wound care team is dedicated to helping chronic wounds heal where traditional methods have failed. Our treatments include advanced diagnostic testing, debridement, advanced wound-dressing technology, negative pressure therapy, and many other techniques and technologies.

2015 Highlights | ED Process Redesign



At Valley Presbyterian Hospital, our Emergency Department serves as the front door for thousands of patients and families each year. In FY 2015, we treated more than 66,000 patients.

To address the increasing number of patients utilizing our Emergency Department for both critical and urgent care needs, we redesigned our Emergency Department process in January 2015 to improve the patient experience and our operations. In the months leading up to the launch, an interdisciplinary team of hospital leaders and employees mapped workflows, identified best practices and collaborated to develop a new process and flow pattern for treating Emergency Department patients. The primary goal was to have patients seen by a provider as soon as possible.

The redesigned process has replaced traditional triage methods with rapid intake methods to ensure patients are quickly assessed and treated by a provider. As a result, we have redefined how our patients move through the Emergency Department, improved patient safety, reduced patient wait times, eliminated workflow redundancies and made significant strides in patient and staff satisfaction.

2015 Highlights | Telepsychiatry Services



Access to mental health services was one of the top 10 community health needs in our service area, according to the most recent triennial Community Health Needs Assessment we conducted, in 2013.

To address this need, we partnered with Aligned Telehealth Inc. in February 2015 to offer telepsychiatry services to adults, children and seniors. As a result of this partnership, patients in the Emergency Department, as well as inpatients, now have 24/7 access to California-licensed psychiatrists for behavioral health consultations through real-time audio and video technology.

Using FDA-cleared, Intouch robot technology, the psychiatrists are available to conduct clinical assessments and provide patients with a diagnosis and/or treatment options within one hour of VPH's initial contact with Aligned's call center. The psychiatrists also have access to our electronic health record system to document their assessment and recommendations upon completion of the consultation. By offering telepsychiatry services, we give patients in our community improved access to behavioral health consultations. We also have been able to further reduce wait times and overcrowding in our Emergency Department, while increasing patient and staff satisfaction.

2015 Highlights | New Clinics



At Valley Presbyterian Hospital, we continue to expand our outpatient specialty care services to provide patients in our community with neighborhood access to advanced treatments and medical expertise.

In February 2015, we opened the Neurospine Surgery Center, offering minimally invasive spinal treatments to restore and preserve the range of motion in the spine. The outpatient center is located in Tarzana at 5525 Etiwanda Ave., Suite 324, and is led by Graham Mouw, MD, FAANS, FACS. A board-certified neurosurgeon, Dr. Mouw came to VPH from the Cleveland Clinic and is a leading expert in spinal motion preservation surgery, less-invasive surgery, and computer-assisted spinal surgery.

In July 2015, we partnered with Healogics, Inc., the nation's largest provider of wound care and related disease management, to open a hyperbaric oxygen program for the treatment of chronic wounds. The Wound & Hyperbaric Center is located in Van Nuys at 6850 Sepulveda Blvd, Suite 200, and is led by Medical Director Liva Yates Gritton, MD, a specialist in physical medicine and rehabilitation. The Center offers treatments for patients suffering from threatened skin grafts, chronic osteomyelitis, late effects of radiation and severe diabetic foot ulcers.

2015 Highlights | Capital Funding



Providing our patients with safe, high-quality care is our top priority. At Valley Presbyterian Hospital, we are committed to investing the capital necessary to support the hospital's needs now and in the future.

In FY 2015, our Board of Directors approved a three-year capital spending plan totaling more than \$50 million. The plan includes major infrastructure improvements, construction projects, new information systems and technology, and new equipment. In keeping with our mission, the plan is designed to improve patient care and make it easier for our physicians and staff to deliver the best care possible.

As part of the capital spending plan, we started construction in September 2015 on the \$8.4 million renovation and expansion of our Emergency Department. The project will help us to meet the growing needs of patients and families in the San Fernando Valley for many years to come. Plans include adding 14,505 square feet of space and increasing the Emergency Department's bed capacity from 24 to 34 beds, allowing for more efficient service in a comfortable and modern environment. Construction is planned in five phases and is scheduled to be completed over three years.

Community Programs and Benefits



VPH Cares

At Valley Presbyterian Hospital, we have a long tradition of giving back to the San Fernando Valley community. We demonstrate our commitment through the medical services we provide, as well as the community education and outreach we do through our own programs and partnerships with local organizations that are aligned with our mission of building a healthy community.

In 2015, we made a significant impact in the community, reaching more than 10,000 lives through our expansive health education and outreach efforts and our support of other local programs and organizations. We provided more than 3,000 free health and wellness screenings in the San Fernando Valley. These screenings are necessary to ensure the long-term health of our community and to reduce health care costs through preventative care and early detection of health issues.

Community Building

Our employees play a crucial role in our community education and outreach efforts, and many of our leaders and staff volunteer their time and talents outside of their work duties to help out at our Annual Health & Wellness Community Fair, as well as other local health fairs and charities, on behalf of VPH.

In FY 2015, our employee volunteers proudly served in feeding the homeless at Hope of the Valley and the San Fernando Valley Rescue Mission, participated in a holiday toy drive benefiting Loaves & Fishes, assisted in an urban forestry event with Tree People, participated in a career day with Birmingham High School, supported a clothing drive benefiting MEND, and prepared care packages for troops overseas with Operation Gratitude.

Our Partners

We are pleased to acknowledge our local partners, whose efforts we have supported through leadership and collaborative community engagement to improve the health of the San Fernando Valley.

American Diabetes Association
Center for Family Health & Education
Center for Family Care Medical Group
Community Foundation of the Valleys
East Valley P.A.L.S.
El Nido Family Centers
Encino Chamber of Commerce
Fernando Foundation
Greater San Fernando Valley Chamber of Commerce
Los Angeles Area Chamber of Commerce
Los Angeles County Business Federation
Los Angeles Economic Development Corporation
Los Angeles Mission
Los Angeles Valley College
March of Dimes
National Health Foundation
Northeast Valley Health Corporation
Northridge Chamber of Commerce

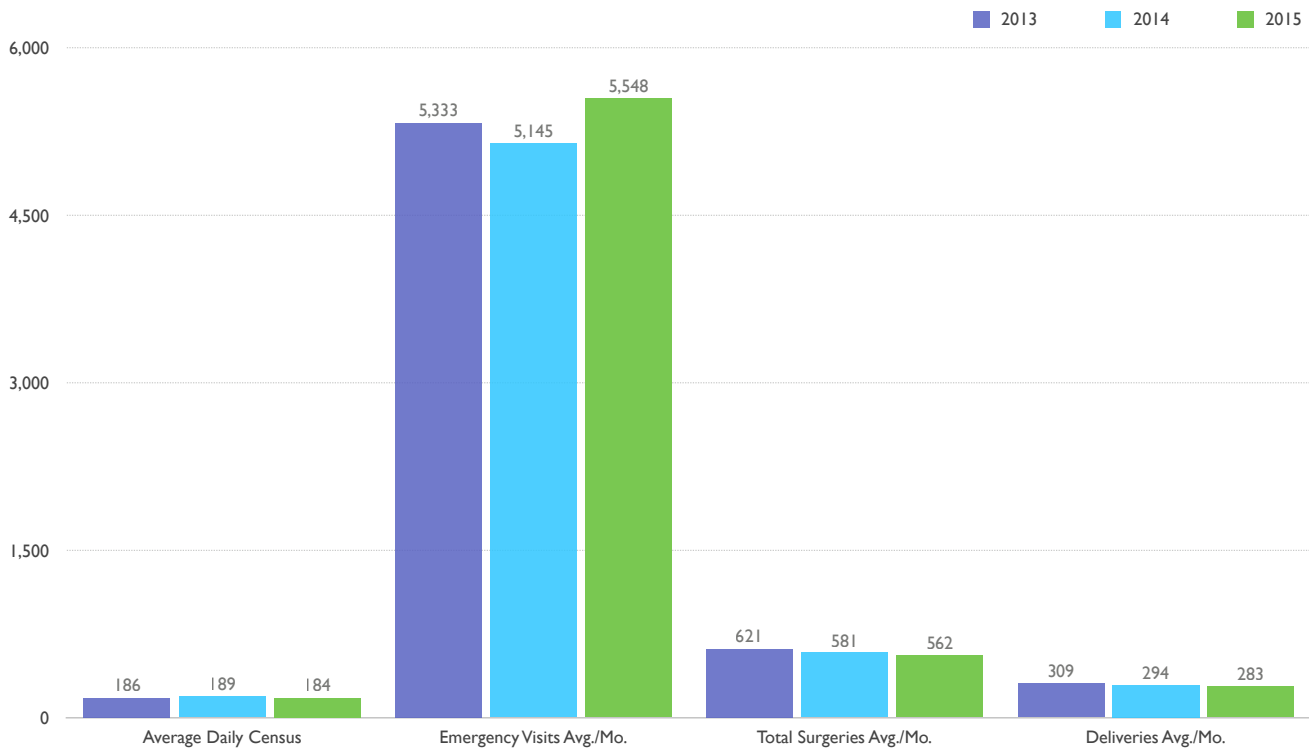
ONEgeneration
Ovarian Cancer Coalition of Greater California
Pacoima Beautiful
Regional Black Chamber of Commerce
San Fernando Valley
San Fernando Valley Interfaith Council
Sherman Oaks Chamber of Commerce
Social and Environmental Entrepreneurs
The Valley Economic Alliance
Tierra del Sol
United Chambers of Commerce
Valley Care Community Consortium
Valley Community Healthcare
VEDC
VICA
Valley Village
West Coast Sports Medicine
Woodbury University

More than 3,000 free health and wellness screenings were administered during the hospital's health fair and through other health fairs in the community.

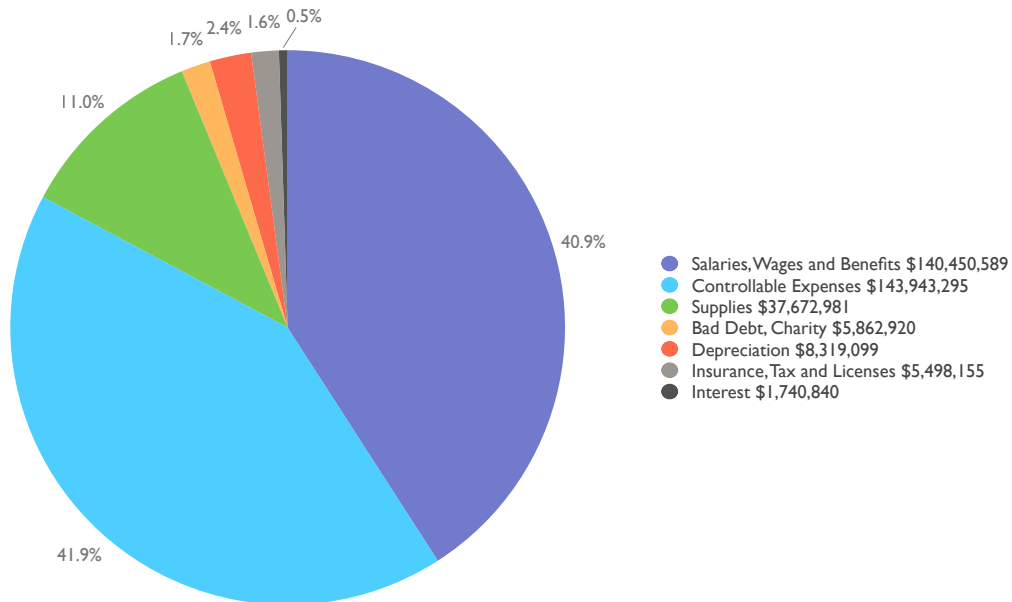


Financial Highlights

2015 Key Volumes



2015 Use of Funds



*Charity care costs include allocations from Salaries, Wages and Benefits, Controllable Expenses and Supplies.

Our Foundation

Message to Our Community

As the San Fernando Valley's only independent, nonprofit hospital, Valley Presbyterian Hospital is a longstanding pillar of the community and serves as a safety net for many of the region's most vulnerable patients.

In October 2015, we announced the formation of the Valley Presbyterian Hospital Foundation solely to raise funds and provide resources for the hospital in support of its mission to improve the quality of health in the San Fernando Valley.

Our Foundation is a nonprofit public benefit corporation led by a 12-member board of directors with strong ties to the community. We depend on the generous gifts and support of local donors and partner organizations to meet the medical needs of the community now and in the future.

As we continue our journey to raise funds and provide resources in support of the hospital, we are guided by our mission and the diverse needs of those we serve. Our efforts include cultivating major gifts and planned giving opportunities, conducting annual fundraising campaigns, offering corporate and physician charitable giving programs, hosting special fundraising and networking events, and pursuing grant opportunities.

We are proud to be a strong and nimble organization that makes decisions based on the growing and changing needs of our community. Gifts to our Foundation, in any amount, will support us as we strive each and every day to serve our community with high-quality, compassionate care.

Best regards,



David Fleming, Chairman of the Board



Pegi Matsuda, Foundation President
& Senior Vice President of Community Development



Circles of Support



“I’ve worked at Valley Presbyterian Hospital for more than 30 years, and take great pride in serving our patients and our community. By participating in the hospital’s employee giving program, Goal Getters, I’m helping to give back to our patients by ensuring that we have the equipment and programs we need to provide the best care for them now and in the future.”

– Darryl Toy
Director of Pharmacy

With Deep Gratitude

Together with the generosity and support of our local patrons, corporations and foundations, Valley Presbyterian Hospital continues to meet the growing and changing health care needs of individuals and families in the San Fernando Valley. Our strong philanthropic community has played an important role in our legacy of service and continues to be vital to our success. We are proud to acknowledge the contributions of our supporters through our established Circles of Support. Through these Circles, we are able to help fund our operations, develop new programs and purchase new equipment and resources that enable us to deliver the best care possible to the thousands of individuals and families we serve.

Goal Getters

At Valley Presbyterian Hospital, we believe our 1,600 employees are one of our greatest assets, and we are grateful to have almost 900 who generously give back to the hospital through our Goal Getters employee giving program. Collectively, these dedicated employees represent one of the hospital’s largest donors. Through the financial support of our Goal Getters program, the hospital has funded equipment and programs that make a difference in the health and wellbeing of the patients we serve.

Circles of Support

President's Circle

At Valley Presbyterian Hospital, we have established the President's Circle to recognize donors who contribute \$1,000 or more annually. Individual donors provide the additional resources needed to support hospital programs and projects, helping us to achieve our vision of "Excellence in all we do."

Gold: \$20,000 and above

Susan & Gregory* L. Kay, MD
Rini & Gustavo** Valdespino

Silver: \$5,000-\$19,999

Pegi Matsuda** & Larry Haworth

Bronze: \$1,000-\$4,999

William C. Allen*
Jeff Allport**
Virginia Bass
Jeffrey Berman
Lori L. Burnell**
Lori Cardle**
Daniel Chandler*
David L. Dennis
Judie Stein Friedman, In Memory of Ira Friedman, MD
California State Senator; Robert Hertzberg
Gayathri S. Jith**
Victoria McNeese**
Carol V. Meikle**
Jo Radford**
Jean Rico**
James Roach, MD
Malcolm K. Rosenbaum, MD
Robert E. Stanton, MD
Marita Teves**
Darryl Toy**
Jack Walter
Jonathan Wu**

* Indicates board member

** Indicates VPH employee



"Valley Presbyterian Hospital is a vital community asset that has been serving thousands of individuals and families each year since its opening in 1958. Through our gift, my wife Susan and I are helping to support the hospital's longstanding mission of improving the quality of health in the San Fernando Valley and its vision of excellence. Our community has many health care needs, and by donating to Valley Presbyterian Hospital, we know we are contributing to an organization that puts those needs above all else."

– Gregory L. Kay, MD
Chairman of the Board



Celebration of Excellence Valley Presbyterian Hospital held its 2nd Annual Celebration of Excellence dinner on May 7, 2015 at the Universal Studios Hollywood Globe Theatre. Approximately 500 guests attended the dinner honoring VPH physician Dr. Nicholas Di Domenico and actor and community activist Edward James Olmos. The event raised funds for the training of future podiatric physicians in the hospital's Amputation Prevention Center, and the Center's general operations.

From left to right: Gustavo Valdespino, President & CEO; Pegi Matsuda, Senior Vice President of Community & Market Development; Edward James Olmos, Actor and Community Activist; Nicholas Di Domenico, MD.



Circles of Support

Legacy Circle

At Valley Presbyterian Hospital, we have established the Legacy Circle to recognize individuals who have made a planned or deferred gift to the hospital. The forward-thinking generosity of these donors helps to secure a bright future for the community for generations to come.

Patron

Robert I. Schueler

Benefactor

Jean & David* Fleming

Friends

Betty & Arthur D. Aston

Lelah B. Balmagia

Robert H. Dilworth

Rose & William W. Edwards

Marianna Fuller

Victor Gehrig

Martha E. Hand

Pegi Matsuda** & Larry Haworth

Harry Hodgson, Jr.

Mabel & Cecil Love

Constance & John F. Mann

Evelyn & John Pertusati

Martha & Richard D. Poast

Myrtle & Russell Quisenberry

Barney C. Ruben

Martha & Robert D. Selleck

Carol & Stuart Solomon

Othmar J. Steioff

Crystal & Roland Tuplin

Patricia & Donald Van Atta



“We made the decision to provide an estate gift to Valley Presbyterian Hospital because of its community ownership, its focus on community needs and its status as a nonprofit, nonsectarian institution.”

– Carol & Stuart Solomon
Community Philanthropists

* Indicates board member

** Indicates VPH employee

Circles of Support

Corporate Circle

At Valley Presbyterian Hospital, we have established the Corporate Circle to recognize businesses whose partnership and support helps to strengthen our community.

Silver: \$5,000 and above

Aon Risk Services, Inc.
Barlow Respiratory Hospital
BNY Mellon Wealth Management
California State University, Northridge Foundation
Community Family Care, IPA
G & M Oil Company, Inc.
Health Net Foundation
J.R. Abbott Construction Inc.
Kindred Healthcare
LA Care Health Plan
Medline Industries, Inc.
MedPoint Management
Navin Haffty & Associates
Nelson+Morris, LLC
Park Place International
Parking Company of America
Payden & Rygel Investment Management
Preferred IPA of California
Preferred Partners Insurance Agency
Renaissance Imaging Medical Associates, Inc.
Sodexo, Inc. & Affiliates
Southern California Gas Company
The Fulcrum Group
Tiller Constructors
Wells Fargo Bank

Bronze: \$500-\$4,999

ACell
All Med Home Health Services
Anthem, Inc.
Arthritis Foundation
Bessolo Haworth & Vogel, LLP
California Business Bureau
California United Bank
Cedars-Sinai Medical Center
Chandler Pratt Partners, LLC
Citadel Environmental
City National Bank
CMRE Financial Services
Columbia Steel, Inc.
Concorde Career College
Community Bank
Cross America Financial
Dearborn Advisors, LLC.
Delta Health Systems
Dummit, Buchholz & Trapp
El Nido Family Centers
Epstein Becker + Green
Essential Biologics, Inc.
Forward Advantage, Inc.
GE Healthcare
Greenberg & Bass
Hanger Clinic
Health Advocates
Health Care LA, IPA
Healthgrades
Hooper, Lundy & Bookman, Inc.
IGEL Technology
IHM Services
Impower Group, Inc.
Imprivata
Insight Enterprises
Intelligent Medical Objects, Inc.
Interstate Rehabilitation Services, LLC
Jacobus Consulting, Inc.
James and Gable Insurance Company
Juniper Networks
Kaufman, Hall & Associates, LLC
Lake Balboa Care Center
Lancaster Pollard
Latham & Watkins
Leidos Health

Lewitt Hackman
 Littler Mendelson Foundation, Inc.
 Los Angeles Daily News
 Los Angeles Police Protective League
 McCarthy Building Companies, Inc.
 Med Assets
 Mike's Roofing & Building
 Moore & Associates
 Morgan Stanley Wealth Management
 Moss Adams LLP
 Northeast Valley Health Corporation
 ONEgeneration
 Osiris Therapeutics
 Owens & Minor, Inc.
 Paul Davis & Alberta Bellisario Insurance Services
 Proficio, Inc.
 Richard Katz Consulting
 Scorpion Healthcare
 Sempra Employee Giving Network
 Seyfarth Shaw, LLP
 Sharp Electronics Corporation
 Sobin-Harte Architects, Inc.
 SoCal Spine, Inc.
 Strategic Building Services
 Strategy Asset Managers, LLC
 Sun Life Financial
 Tech Electric
 Tenet Healthcare Corp.
 The Grace Group
 The Valley Economic Alliance
 Tierra Del Sol
 Timeless Language Center
 Transamerica Retirement Solutions
 Triage Consulting Group
 Tully Wihr
 Valley Economic Development Center
 Van Nuys Airport
 Vitas Hospice Services
 VMware, Inc.
 Western Dental Services, Inc.
 Windsor Terrace Healthcare Center
 Woodbury University, School of Business



“Preferred Partners is proud to
 partner with Valley Presbyterian
 Hospital. We share the hospital’s
 unwavering commitment to
 quality and service, and through
 our partnership and support,
 we know we can make a positive
 impact in the community.”

– Jeff Adams
 Partner, Preferred Partners

Circles of Support

Physician Circle

At Valley Presbyterian Hospital, we have established the Physician Circle to acknowledge physicians on our Medical Staff who have demonstrated their support for the hospital through philanthropic gifts, as well as through their dedicated service to our patients.

Gold: \$10,000 and above

Anonymous
Emergent Medical Associates

Silver: \$2,000-\$9,999

George Andros, MD
Nicholas Di Domenico, MD
Eugene Dula, MD
EmCare
Dennis Kasimian, MD
Michael Kirsch, MD
Peter Koetters, MD*
Ganesh Pandian, MD*
Kevin Rice, MD
San Fernando Valley Medical Group
Sukshma Sreepathi, MD*
Valley Internal Medicine & Nephrology Medical Group
Patrick Walsh, MD

Bronze: \$500-\$1,999

Raana Anwaruddin, MD
Marie Beall, MD
Bassam Bejjani, MD
Ashwani Bhardwaj, MD
Kenneth Buch, MD
James Burks, MD
California Dialysis
Eric Espensen, DPM
Richard Ferkel, MD
Herbert Huddleston, MD
Babak Kosari, DPM
Kambiz Kosari, MD
Thomas Lomis, MD
Diego Mechoso, MD
Ronald Miller, MD
Todd Moldawer, MD*
Graham Mouw, MD
Brian Ostick, MD
Llorens Pembroke, MD
Michael Polisky, MD
Sridhar Ramachandran, MD
Michael Ross, MD
William Robinson, MD

* Indicates board member

** Indicates VPH employee

Grants

Grants from public and private foundations play a vital role in our fundraising program. Through the generosity of the organizations listed below, we have been able to purchase new equipment, make capital improvements and expand our service to the community through health education and outreach.

California Community Foundation
First 5 Los Angeles
Lon V. Smith Foundation
UniHealth Foundation
Weingart Foundation



“Emergent Medical Associates is proud to serve the critical health care needs of the San Fernando Valley community through a partnership with the Valley Presbyterian Hospital Emergency Department. As physicians, we see and treat the community’s needs firsthand. By supporting the hospital, we are helping to save and improve our patients’ lives and to meet the region’s growing demand for emergency services.”

– Mark Bell, MD, FACEP
President, Emergent Medical Associates

Leadership

BOARD OF DIRECTORS

Gregory Kay, MD, Chairman of the Board

Community Representative

David W. Fleming, Chairman Emeritus

Attorney, Latham & Watkins, LLP

Sukshma Sreepathi, MD, Chief of Staff

President, Tri-Valley Neonatal Medical Group

William C. Allen, Secretary

President & CEO of the Los Angeles Economic Development Corp.

Alex Guerrero, Treasurer*

Chief Operating Officer, VEDC

James C. Porter, Treasurer**

Community Representative

David Adelman

Partner, Greenberg & Bass, LLP

Daniel Chandler

Chandler Pratt & Partners

Dianne F. Harrison, PhD

President, California State University, Northridge

Richard Katz

Owner, Richard Katz Consulting

Diego Mechoso, MD

Medical Director of Pediatrics,
Valley Presbyterian Hospital

Matthew G. Mischel, MD

Physician, Valley Internal Medicine & Nephrology
Medical Group

Todd D. Moldawer, MD

Physician, Southern California Orthopedic Institute

M. Ganesa Pandian MD, FACC

Medical Director of Cardiology,
Valley Presbyterian Hospital

Tracy Rafter

CEO, Los Angeles County Business Federation

Joshua Rokaw, MD

Physician, Internal Medicine Associates

Barbara Romero

Commissioner, Los Angeles Public Works

Stuart M. Solomon**

President & Founder
Transcon Property Services

Tony Tartaglia

Public Affairs Manager, Southern California Gas
Company

Francisco Uribe

Director of State, Local and International
Government Relations, The Home Depot, Inc.

Gustavo Valdespino

President & CEO, Valley Presbyterian Hospital

Vladimir Victorio

Vice President – Senior Private Banker,
Wells Fargo Private Bank

EXECUTIVE TEAM

Gustavo Valdespino

President & Chief Executive Officer

Jean Rico

Senior Vice President of Quality

Lori Cardle

Senior Vice President of Finance & Operations
and Chief Financial Officer

Gayathri S. Jith

Senior Vice President of Strategy & Ambulatory
Services

Lori Burnell, RN, PhD, NEA-BC

Senior Vice President & Chief Nursing Officer

Pegi Matsuda***

Senior Vice President of Community
& Market Development

Jeff Allport

Vice President & Chief Information Officer

Jonathan Wu

Vice President of Human Resources

MEDICAL EXECUTIVE COMMITTEE

Medical Staff Officers

Sukshma R. Sreepathi, MD

Chief of Staff

Joshua A. Rokaw, MD

Vice Chief of Staff

Diego A. Mechoso, MD

Secretary/Treasurer (through April 2015)

Peter Koetters, MD

Secretary/Treasurer (started May 2015)

Members at Large

Samuel Kashani, MD

Kambiz Kosari, MD

Matthew Mischel, MD

Brian Ostick, MD (through July 2014)

Nicholas Borm, MD (started June 2015)

Andrea Reiche, MD

Sanjay Vadgama, MD

Medical Departments & Representatives

Division of Anesthesiology

Ali Manoochehrian, MD

(started January 2015)

Jonathan Maskin, MD

(through December 2014)

Emergency Department

Brian Ostick, MD

Department of Medicine

Michael Polisky, MD

Department of OB/GYN

Hormoz Farhat, MD

Department of Pathology

Dennis Kasimian, MD

Department of Pediatrics

Peter Koetters, MD

(through April 2015)

Diego Mechoso, MD

(started May 2015)

Division of Radiology

Kevin Rice, MD

Department of Surgery

Farshad Malekmehr, MD

*Term started December 2014

**Term ended December 2014

***Named Foundation President & Senior Vice President of
Community Development in June 2015

VALLEY
PRESBYTERIAN
HOSPITAL

Excellence in all we do

15107 Vanowen Street | Van Nuys, CA 91405

  818.782.6600 | valleypres.org