



VALLEY PRESBYTERIAN
HOSPITAL

ANNUAL REPORT 2022

CELEBRATING OUR CULTURE

During the pandemic through to the new normal we find ourselves in today, we have seen the importance of teamwork, open communication and compassion. These actions have made us effective in treating patients and more resilient to each new challenge put in our way. Though nothing we've done has been easy, it has been possible because of the culture created here at VPH. Described as feeling like being part of a family, being seen and heard individually and not like a number, with shared goals and values to improve the health of our patients and community, our culture is the healthy heartbeat of a vital organization ready for what's next.





To our community,

For those of us that call this hospital our home, serving our neighbors in need is an honor and responsibility we hold close to our hearts.

That is why we dedicate our energy and resources into our people, because we believe that when our employees, medical staff, and volunteers are well supported in achieving their goals and feeling their best, they will serve their patients best.

We look after their financial well-being, taking responsible actions to sustain jobs and opportunities for advancement. We listen to their needs so they have the control over their working environments that improve quality, safety and their own satisfaction. Finally, we set standards and drive performance to those standards equitably and transparently.

Our mission is to improve the health and well-being of the San Fernando Valley. Long may this continue!

Kalpesh Patel, MD
Chief of Staff

Gregory L. Kay, MD
Chairman of the Board

Gustavo Valdespino
President & CEO

**Valley Presbyterian
Hospital has a culture that
is based on teamwork.
We share our core values
as a foundation to work
together as a team and
provide safe and quality
care for our patients.**

Armine Ghukasyan, MSN, RN, Clinical Nurse Manager, Women's Services



OUR SERVICES

Acute Rehabilitation Services

We provide patients with acute rehabilitation needs with an interdisciplinary team that delivers holistic, patient-centered care. Led by a board-certified physical medicine and rehab physician, the team includes 24-hr on-call nurses, physical therapists, a neuropsychologist, and a broad range of specialists.

Children's Services

We provide compassionate and specialized pediatric care including a neonatal intensive care unit (NICU) Level III, a pediatric intensive care unit (PICU) and a designated Pediatric Medical Center. Each member of our pediatric care team shares a family-centered approach to providing the treatment and support needed for positive outcomes. We are equipped to serve the individual health care needs of children from newborn to age 18.

Emergency Services

With several designations, our emergency services continues to demonstrate our commitment to excellent care. As a certified cardiac receiving center for heart attack patients, our specialists collaborate to provide critical care within 90 minutes of the onset of chest pain. In addition, our facility is a certified Primary Stroke Center. We have a dedicated stroke-focused program staffed by qualified, specially trained medical professionals who use advanced technologies to act quickly and save lives. Our Emergency Department is also designated as an Emergency Department Approved for Pediatrics, with expedited and specialized care for pediatric patients.

Heart & Vascular Services

We offer a full range of cardiac services to quickly and accurately diagnose and treat patients suffering from critical heart and vascular conditions. An expert, multidisciplinary medical team is dedicated to acting quickly and saving patients' lives.

Maternity Services

Our Maternity Services Department delivers more babies than any other hospital in the San Fernando Valley. We offer a family-centered approach and are dedicated to providing comfort and support through the journey of pregnancy, birth and early parenthood.

Outpatient Services

We offer many outpatient services through our general and gastrointestinal laboratories, Radiology/Imaging Department and therapy programs, including occupational, physical, respiratory and nuclear medicine.

Surgery Services

We provide a broad range of surgical services representing a wide array of specialty areas. Our physicians and surgical services staff have the tools and advanced technology they need to perform a full range of surgical procedures and to deliver the highest quality of care.

Wound Services

Whether in our Center for Wound Healing or our Wound & Hyperbaric Center, our interdisciplinary approach brings together expertise of vascular and pediatric surgeons and other specialized support professionals in a state-of-the-art setting. For chronic wounds that have not benefited from traditional methods, our treatments include advanced diagnostic testing, debridement, advanced wound-dressing technology, negative pressure therapy and many others.



**We are hardworking
individuals that
represent and serve
the community with our
hearts on our sleeves.**

Lermy Macias, Education Coordinator/LMS Administrator, Education





COMMUNITY BENEFIT



\$4,565,169

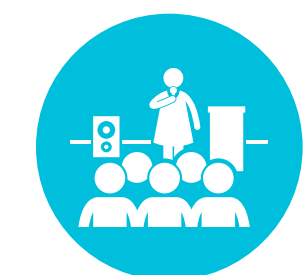
Charity Care

\$6,700,387

Direct Community Support

66,771

People Impacted



609

Community Classes



92%

Of mothers who are part of the First 5 LA's Welcome Baby Program breastfed their infants in the hospital.

Community Partners

- African American Infant Maternal Mortality Coalition
- Alzheimer's Association
- American Heart Association
- Chrysalis
- Columbus Elementary School
- Comprehensive Community Health Centers
- Esiner Health Centers
- Encino Chamber
- Fit 4 the Cause
- Greater San Fernando Valley Chamber
- Hope of the Valley
- LA Family Housing
- LA Food Bank
- Leukemia & Lymphoma Society
- MEND
- Mid Valley YMCA
- Mindful Veteran Project
- NEV Best Start
- NEW Economics for Women
- North Valley Caring Services
- Northeast Valley Healthcare Corporation
- OneGeneration
- Ovarian Cancer Coalition of Greater California
- Pacoima Charter Elementary
- Partners in Care Foundation
- El Proyecto del Barrio
- Pueblo y Salud
- San Fernando Valley Breast Cancer Foundation
- San Fernando Valley Community Mental Health Center
- San Fernando Valley Rescue Mission

- Tarzana Treatment Center
- The Orphan Project
- Tierra Del Sol
- Valley Community Care Consortium
- Valley Community Healthcare
- Valley Economic Alliance
- Valley Family Center
- Valley Economic Alliance
- Vision y Compromiso
- West Valley YMCA

Compassion in Action

In Fiscal Year 2022, 120 VPH employees performed over 100 community volunteer hours through 25 community agencies and activities. Some examples of activities include health screenings, food distribution, meal delivery, feeding the homeless, and donating toys and school supplies.





Everyone that I work with has great moral values and is always trying to do the right thing for our patients, visitors, and co-workers.

Jorge Flores, General Maintenance, Plant Operations



DONOR COMMUNITY

President's Circle

Bronze: \$5,000-\$19,999

Gustavo and Rini Sultant-Valdespino
Tyrone Waller
Zahra Moraghar

Friends of the President's Circle: \$1,000-\$4,999

Alan Taylor
Beth & Jim Zachary
Christopher Alvarez
Chris & Lori Cardle
Ellen G. Riley
Hannah Grossman, M.D.
James Pietsch
Jeff Horn
Lori Burnell, Ph.D.
Mary Beth Walker
Noramay Cadena
Paul A. Brailsford, M.D. and Tammi
McMann Brailsford
Robert C. Myrtle, Ph.D.
Tony & Miriam Evans

Physician Circle

Gold: \$10,000 and above

Emergent Medical Associates
Joseph & Evelyn Pertusati
Charitable Trust

Silver: \$2,000-\$9,999

Gnana M. Desigan, M.D.
Kevin Rice, M.D.
Liva Yates Gritton, M.D.
Mid-Valley Pulmonary and
Sleep Diagnostic
Renaissance Imaging Center Van Nuys
Ronald J. Belczyk, D.P.M.
Shahram Farahvash, M.D.
Peter J. Koettters, M.D.

Bronze: \$500 - \$1,999

Bolatito Abe, M.D.
Brian Ostick, M.D.
Munaf A. Shamji, M.D.
Todd D. Moldawer, M.D.

Corporate Circle

Gold: \$10,000 and above

Dume Wolverine Foundation
Lon V. Smith Foundation
Payden & Rygel Investment
Management
Preferred Partners Insurance Agency

Silver: \$5,000 - \$9,999

Barlow Respiratory Hospital
Cedars-Sinai Medical Center
Children's Hospital LA
Clumeck Stern Schenkelberg & Getzoff
Community Family Care, IPA
Geva Construction, Inc.
Health Net Foundation
Marquee Health
MedPOINT Management
Seyfarth Shaw LLP
The Fulcrum Group

Bronze: \$1,000 - \$4999

Anthem, Inc.
BenefitMall
Chandler Partners
CloudWave
Comprehensive Community Health
Centers, Inc.
Consensus Cloud Solutions
Dummit, Buchholz & Trapp
Essential Biologics, Inc.
Fortified Health Security
Hooper, Lundy & Bookman, P.C.
Joe's Auto Parks
Lockton Insurance Brokers, LLC

Marvel Path
Morgan & Leahy
Moss Adams
Optumcare Management, LLC
P & H Metal Products
Pacific Coast Multi Specialty Surgery
R.A. Fischer
Renovo Solutions
RxBenefits
SoCal Spine, Inc.
Steinberg Law
The M & T Charitable Foundation
Tierra Del Sol
Valley Kidney Care Medical Group
Vizient Inc.
Wells Fargo
Wesely-Thomas Enterprises, Inc.

Grants

Ventura County Community
Foundation
Weingart Foundation

Goal Getters

We believe our 1,700 employees are our greatest assets, and we are grateful to have more than 1000 who generously give back to the hospital through our Goal Getters employee giving program. Collectively, these dedicated employees represent one of the hospital's largest donors. Through the financial support of our Goal Getters program, the hospital has funded equipment and programs that make a difference in the health and well-being of the patients we serve.

FINANCIALS

The following data presents financial, operational and utilization statistics over a 12-month period, ending with December 31, 2022.

2022 Use of Funds



55.6%
Salaries, Wages & Benefits
\$187,998,381



3.7%
Depreciation
\$12,407,390



24.0%
Controllable Expenses
\$81,201,714



1.3%
Insurance, Tax & Licenses
\$4,304,005



12.7%
Supplies
\$42,835,679



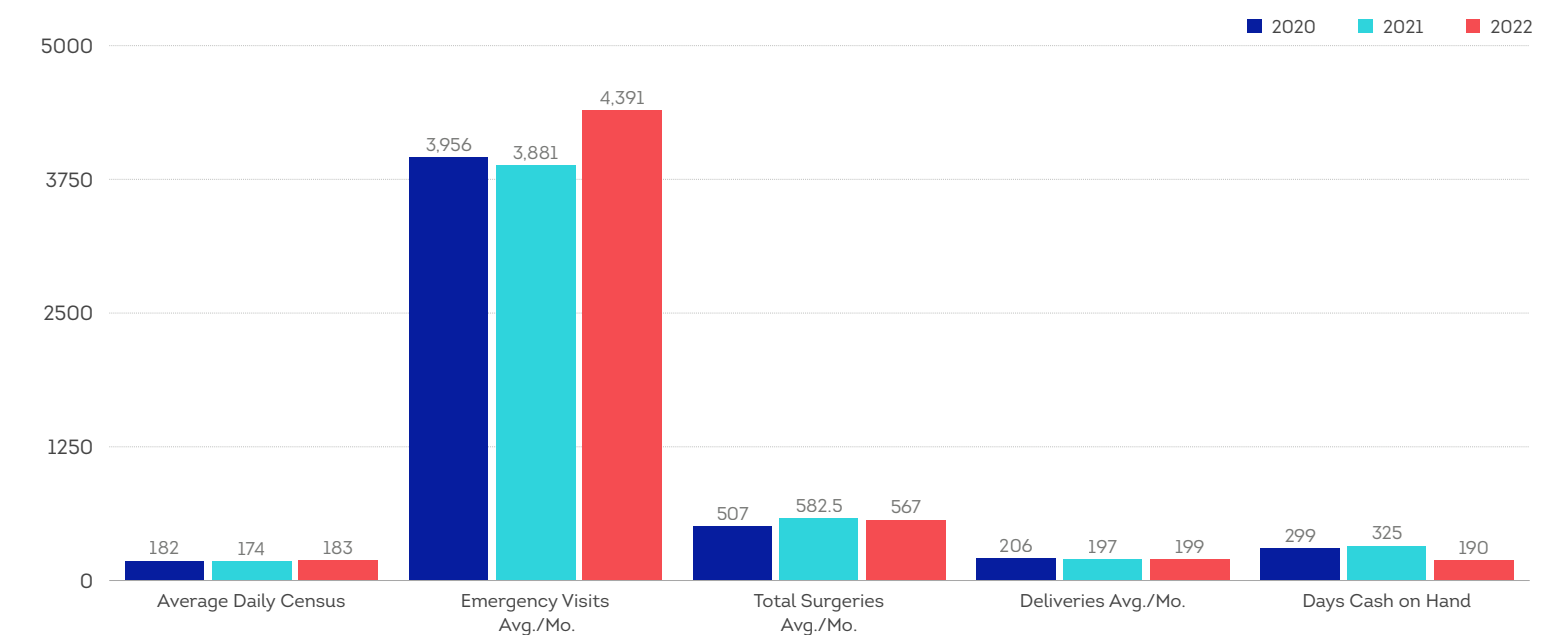
0.4%
Interest
\$1,247,618



2.4%
Bad Debt/Charity
\$7,985,321

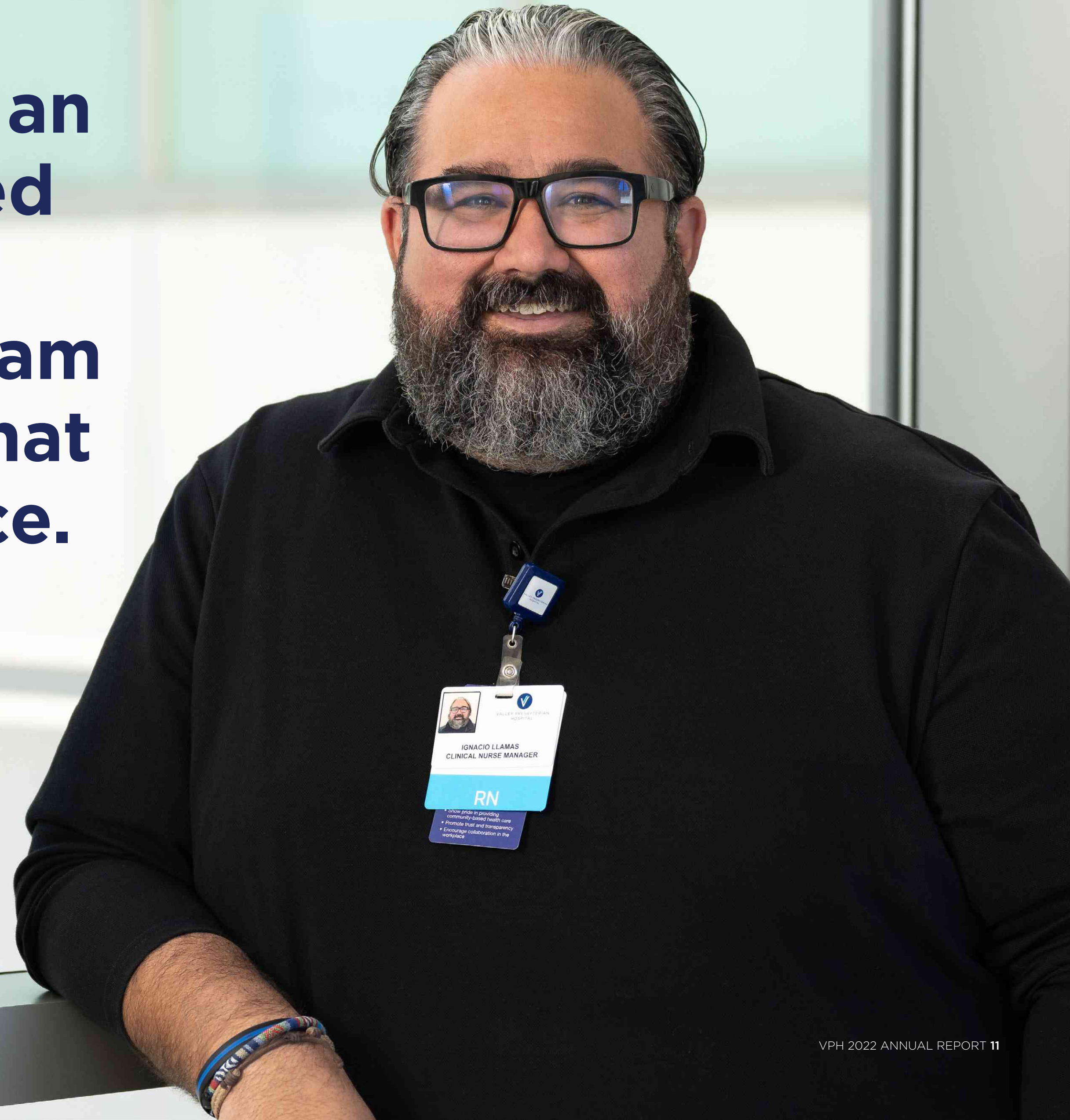


2022 Key Statistics



I'm not just an employee, but an integral part of a multifaceted team that is critical in the success of the organization. I am empowered to have a voice that actually can make a difference.

Ignacio Llamas, BSN, RN Clinical Nurse Manager, Emergency Department



LEADERSHIP

Board of Directors

Greg Kay, MD,
Chairman of the Board
Community Representative

Beth Zachry
Vice Chair of the Board
Healthcare Executive, Retired

David W. Fleming
Chairman Emeritus, Special Advisor,
Office of State Senator
Robert Hertzberg

Luca Jacobellis
Secretary of the Board Executive,
R.A. Fischer

Bolatito Abe, MD
Medical Staff's Secretary/Treasurer
(Ex-Officio)Physician, Hospitalist,
Valley Presbyterian Hospital

Kalpesh Patel, MD
Medical Staff's Chief of Staff
Physician, Valley Kidney Care

Noramay Cadena
Community Member

Daniel Chandler
President, Chandler Partners

Liva Yates Gritton, MD
Medical Director, Acute Rehabilitation
Unit, Center for Wound Healing and
Wound & Hyperbaric Center,
Valley Presbyterian Hospital

Peter Koettters, MD
Physician, Pediatric Hospital
Care Associates

Merryl McElwain
Sr. Wealth Advisor, Wilmington Trust

Todd Moldawer, MD
Medical Doctor

Robert C. Myrtle, DPA
Professor Emeritus, University of
Southern California

Brian Ostick, MD
Medical Director of Emergency
Services, Valley Presbyterian Hospital

Ellen Riley
Senior Vice President; Kaufman,
Hall & Associates, LLC

Diana Sanchez
Director of Public & Community
Relations, Los Angeles World Airports,
Van Nuys

Stuart Solomon
President, Pacific Reality Partners

Keven Steinberg, Esq.
Attorney, Steinberg Law

Gustavo Valdespino
President & CEO,
Valley Presbyterian Hospital

Mary Beth Walker
Provost & VP for Academic Affairs,
California State University Northridge

Executive Team

Gustavo Valdespino
President & CEO

Lori Cardle
Executive Vice President & Chief
Operating Officer

Charles Orlando
Senior Vice President &
Chief Financial Officer

Hannah Grossman, MD
Senior Vice President & Chief
Medical Officer

Lori Burnell, RN, PhD., NEA-BC
Senior Vice President & Chief
Nursing Officer

Tamala Choma, Esq. MS CCC-SLP
Vice President & General Counsel

Tony Evans
Vice President & Chief Information
Officer

Diana Milan-Finley
Associate Administrator, Operations
Support Services

Todd Connelly
Associate Administrator,
Human Resources

Medical Executive

Officers

Kalpesh Patel, MD
Chief of Staff

Bolatito Abe, MD
Vice Chief of Staff

Brian Ostick, MD
Immediate-Past Chief of Staff

Department Chairs

Nicholas Borm, MD
Emergency Medical Services

Shahram Farahvash, MD
Anesthesiology

Julianne Harrison, DO
Pediatrics

Sanket Kunde, MD
Medicine

Michael Legmann, MD
Pathology

Farshad Malekhmehr, MD
Surgery

Marcelo Spector, MD
Radiology

Sanaz Tafti, MD
Obstetrics and Gynecology

Georges Tanbe, MD
Cardiology

Members-at-Large

Nellie Ekmekjian, MD

Nima Rabbani, DO

Heather Shenkman, MD

Sanjay Vadgama, MD